

Yo<sup>2</sup>

rugs.

steel

# philosophy.

Our rug designs come in various beautiful styles, shapes and color variations. Contemporary, baroque, with subtle shades or busy creations, light or dark colors, geometric, floral and ornamental patterns. A certified product for heavy commercial use and recommended for areas with heavy traffic as well as residential use. Fantastic color and print quality, with an excellent feel and high sound absorption. Beautiful rugs combine highly qualitative material and color technology. YO2 rugs will enrich your lives and living spaces with new ideas that bring a twist of classic influences into contemporary creations. A marriage of unpretentious beauty and timeless rug art.

# designers.

ctrlzak | pericles liatsos | studio job | elena georghiadou  
konstantinos charilaou | valeriya chubenko | christina onisiforou

# I N D E X

COLLECTION:  
ART SLOTS

PAGES  
28  
-  
45



AS3.06



AS3.08



AS3.03



UC3.01

COLLECTION:  
UNREAL CLIPS

PAGES  
46  
-  
63



UC3.08



UC3.03

COLLECTION:  
LACK METHODS

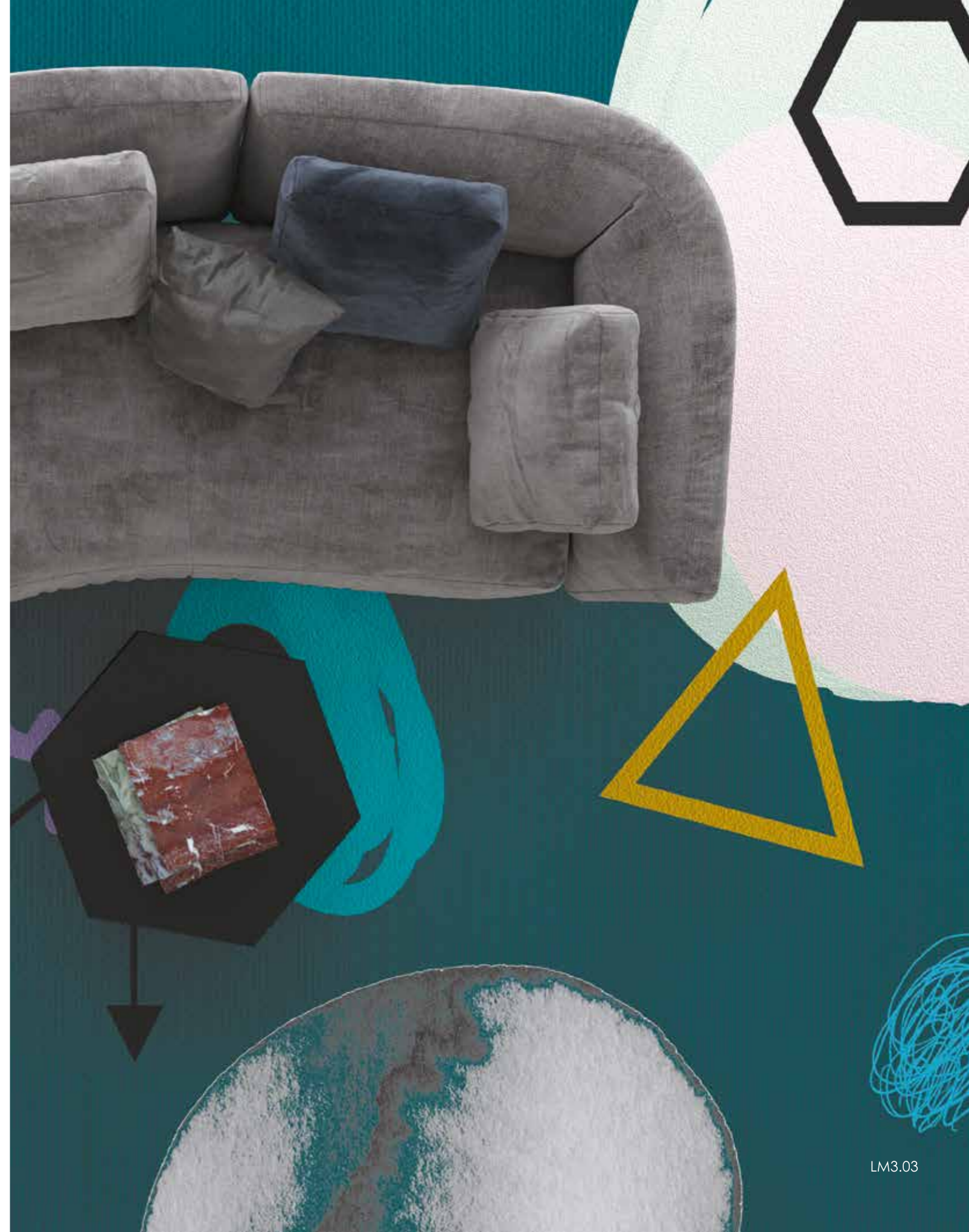
PAGES  
64  
-  
81



LM3.02



LM3.04



LM3.03



CP3.08

COLLECTION:  
CLIP PROFILES

PAGES

82  
-  
99



CP3.06



CP3.03

COLLECTION:  
GROOVE FLASHES

PAGES  
100  
-  
103



GF3.01

COLLECTION:  
DOMESTIC NATURE

PAGES  
104  
-  
107



DN3.01

COLLECTION:  
SLASH LIMITS

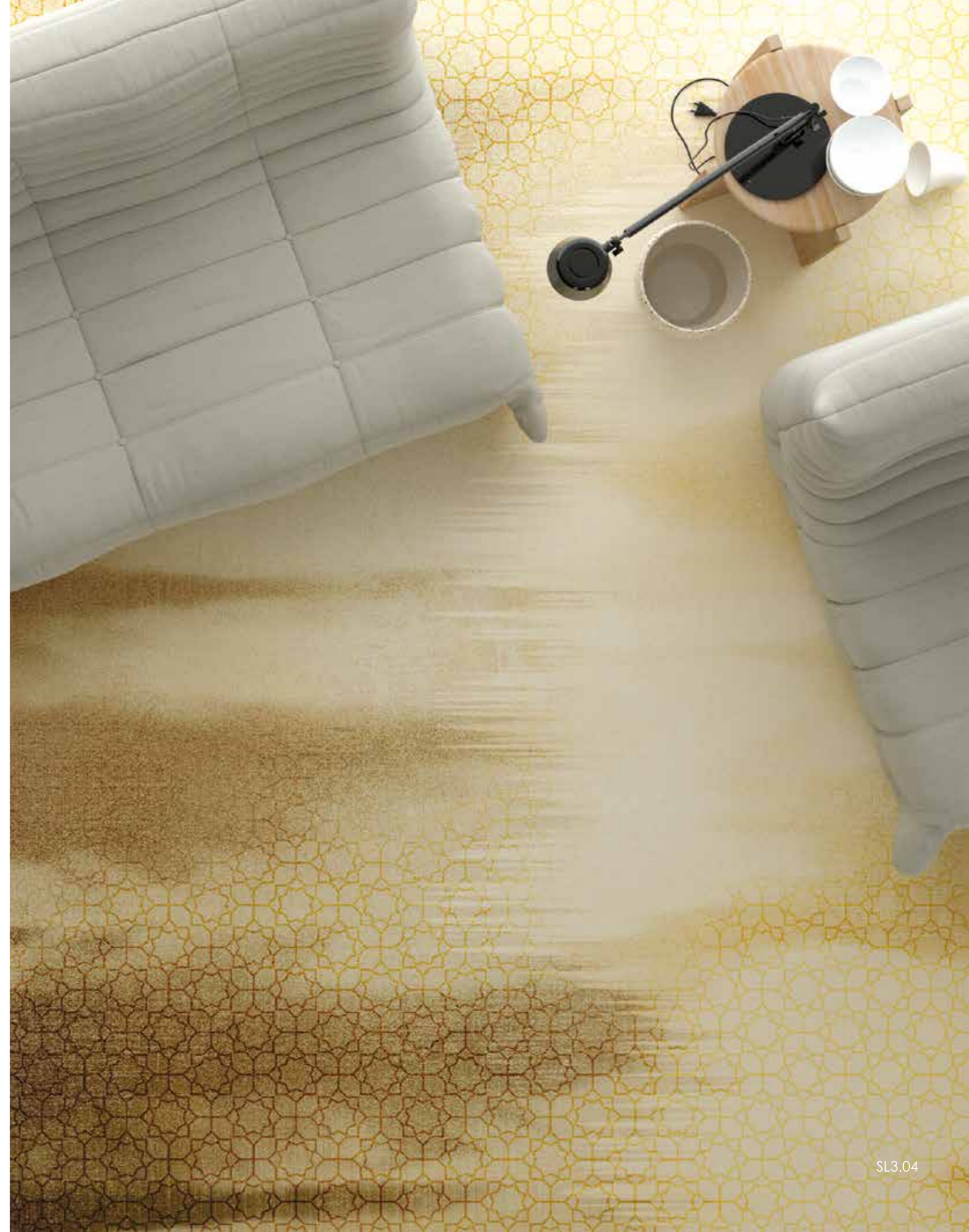
PAGES  
108  
-  
125



SL3.02



SL3.05



SL3.04





DC3.07

COLLECTION:  
DEEP COMPLEXES

PAGES  
126  
-  
143



DC3.02



DC3.08

COLLECTION:  
OLDEN MASTERS

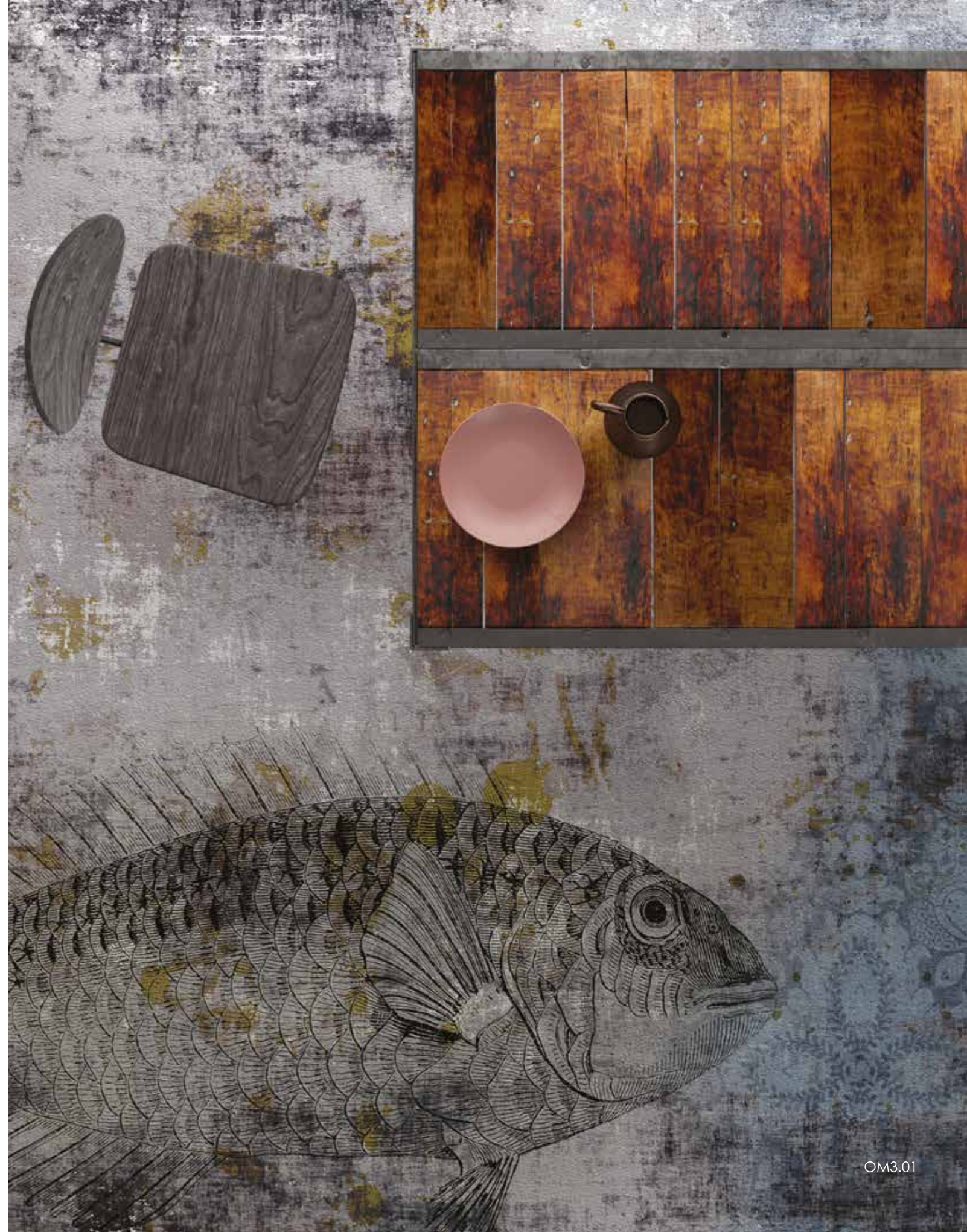
PAGES  
144  
-  
161



OM3.08



OM3.07



OM3.01



NT3.02

COLLECTION:  
NET TROLLS

PAGES  
162  
-  
179



NT3.01



NT3.04

COLLECTION:  
CORAL LOSS

PAGES  
180  
-  
183



CL3.01

COLLECTION:  
RECKON FIGURES

PAGES  
184  
-  
187



RF3.01

COLLECTION:  
COOL CUTS

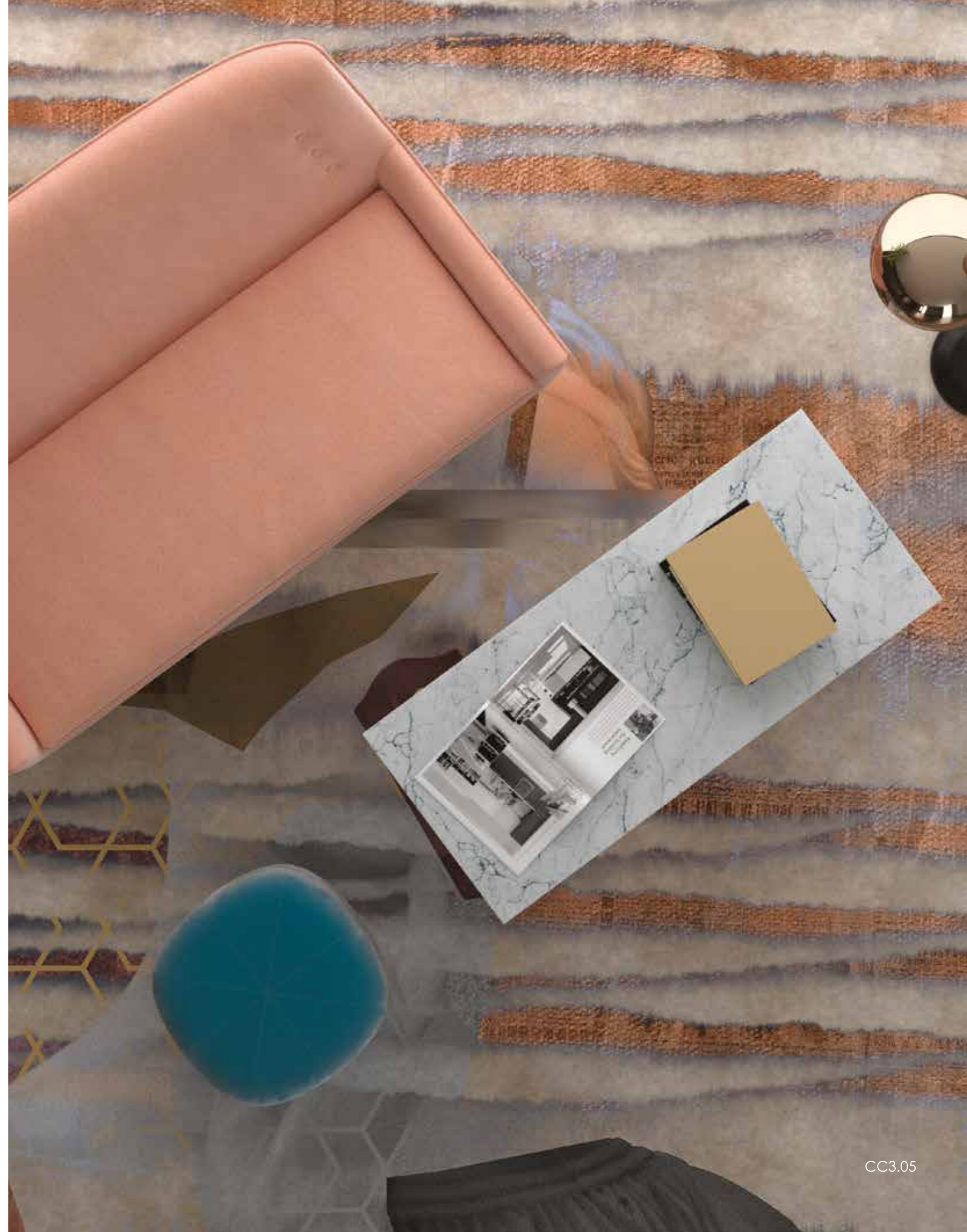
PAGES  
188  
-  
205



CC3.02



CC3.04



CC3.05

COLLECTION:  
ANIMAL LESS

PAGES  
206  
-  
209



AL3.01

A S

3

COLLECTION

A R T S L O T S

# AS3.01

A R T S L O T S

○ AVAILABLE AS BROADLOOM



350 φ | 300x200 | 400x300 cm AS3.01.1



350 φ | 300x200 | 400x300 cm AS3.01.2



350 φ | 300x200 | 400x300 cm AS3.01.3





AS3.02.1 350 φ | 300x200 | 400x300 cm



AS3.02.2 350 φ | 300x200 | 400x300 cm



AS3.02.3 350 φ | 300x200 | 400x300 cm

AVAILABLE AS BROADLOOM 

# AS3.02

A R T S L O T S



# AS3.03

A R T S L O T S

○ AVAILABLE AS BROADLOOM



350 φ | 300x200 | 400x300 cm AS3.03.1



350 φ | 300x200 | 400x300 cm AS3.03.2



350 φ | 300x200 | 400x300 cm AS3.03.3



AS3.04.1 350 φ | 300x200 | 400x300 cm



AS3.04.2 350 φ | 300x200 | 400x300 cm

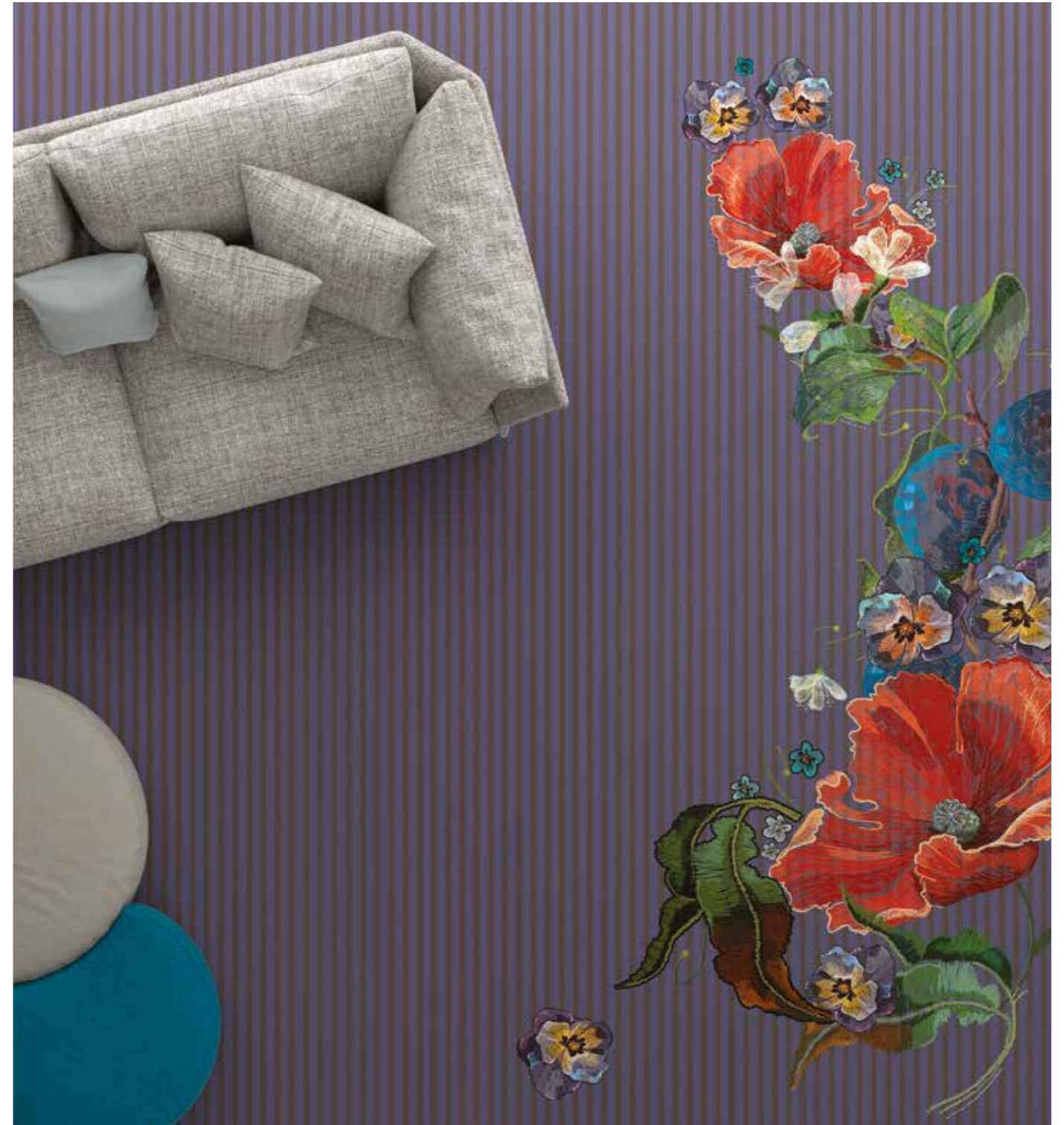


AS3.04.3 350 φ | 300x200 | 400x300 cm

AVAILABLE AS BROADLOOM 

# AS3.04

A R T S L O T S



# AS3.05

A R T S L O T S

○ AVAILABLE AS BROADLOOM



350 φ | 300x200 | 400x300 cm AS3.05.1



350 φ | 300x200 | 400x300 cm AS3.05.2



350 φ | 300x200 | 400x300 cm AS3.05.3



AS3.06.1 350 φ | 300x200 | 400x300 cm



AS3.06.2 350 φ | 300x200 | 400x300 cm



AS3.06.3 350 φ | 300x200 | 400x300 cm

AVAILABLE AS BROADLOOM 

# AS3.06

A R T S L O T S



# AS3.07

A R T S L O T S

○ AVAILABLE AS BROADLOOM



350 φ | 300x200 | 400x300 cm AS3.07.1



350 φ | 300x200 | 400x300 cm AS3.07.2



350 φ | 300x200 | 400x300 cm AS3.07.3



AS3.08.1 350 φ | 300x200 | 400x300 cm



AS3.08.2 350 φ | 300x200 | 400x300 cm



AS3.08.3 350 φ | 300x200 | 400x300 cm

AVAILABLE AS BROADLOOM 

# AS3.08

A R T S L O T S



U C

3

COLLECTION

U N R E A L C L I P S



# UC3.01

UNREAL CLIPS



350  $\phi$  cm UC3.01.1



350  $\phi$  cm UC3.01.2



350  $\phi$  cm UC3.01.3



# UC3.02

UNREAL CLIPS



UC3.02.1

350  $\phi$  cm



UC3.02.2

350  $\phi$  cm



UC3.02.3

350  $\phi$  cm



# UC3.03

U N R E A L C L I P S



350  $\phi$  cm UC3.03.1



350  $\phi$  cm UC3.03.2



350  $\phi$  cm UC3.03.3

# UC3.04

UNREAL CLIPS



UC3.04.1

350  $\phi$  cm



UC3.04.2

350  $\phi$  cm



UC3.04.3

350  $\phi$  cm



# UC3.05

UNREAL CLIPS



350  $\phi$  cm UC3.05.1



350  $\phi$  cm UC3.05.2



350  $\phi$  cm UC3.05.3



# UC3.06

UNREAL CLIPS



UC3.06.1

350  $\phi$  cm



UC3.06.2

350  $\phi$  cm



UC3.06.3

350  $\phi$  cm



# UC3.07

UNREAL CLIPS



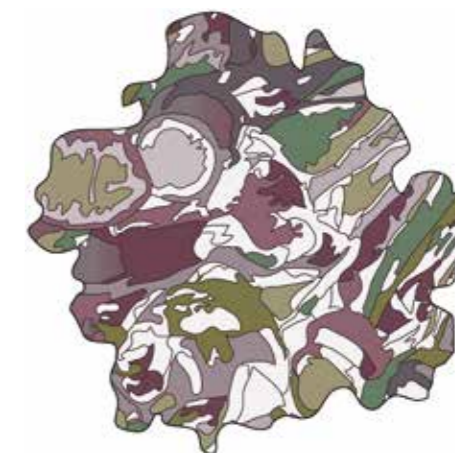
350  $\phi$  cm UC3.07.1



350  $\phi$  cm UC3.07.2



350  $\phi$  cm UC3.07.3



# UC3.08

UNREAL CLIPS



UC3.08.1

350  $\phi$  cm



UC3.08.2

350  $\phi$  cm



UC3.08.3

350  $\phi$  cm





L M

3

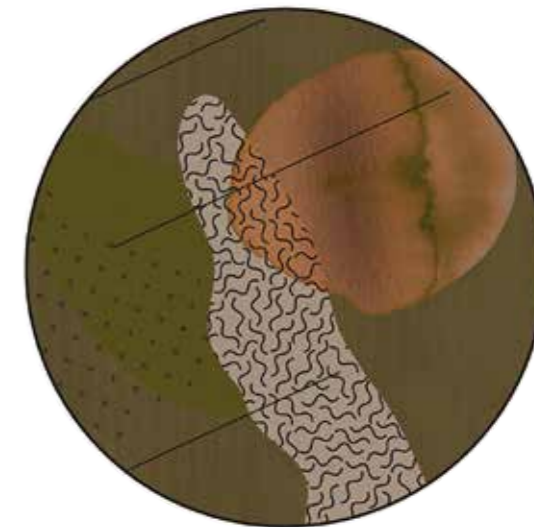
COLLECTION

L A C K M E T H O D S

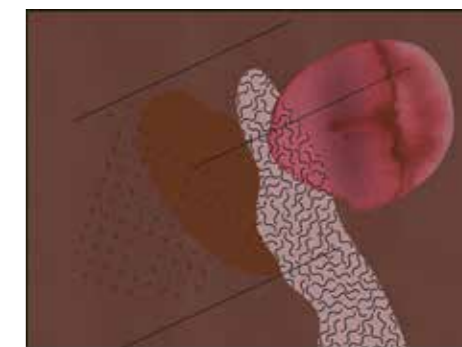
# LM3.01

L A C K M E T H O D S

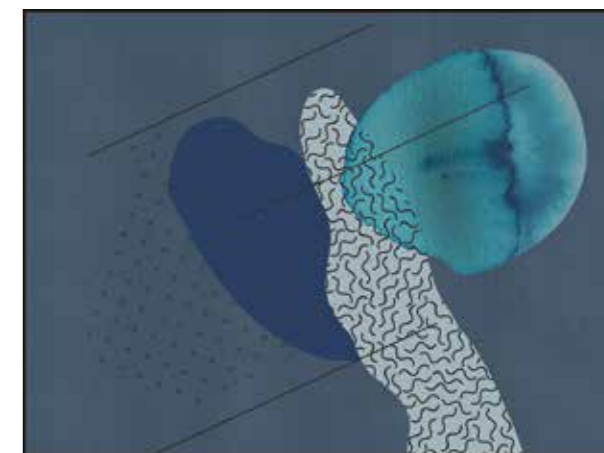
○ AVAILABLE AS BROADLOOM



350  $\phi$  | 300x200 | 400x300 cm LM3.01.1



350  $\phi$  | 300x200 | 400x300 cm LM3.01.2



350  $\phi$  | 300x200 | 400x300 cm LM3.01.3



LM3.02.1 350 φ | 300x200 | 400x300 cm



LM3.02.2 350 φ | 300x200 | 400x300 cm

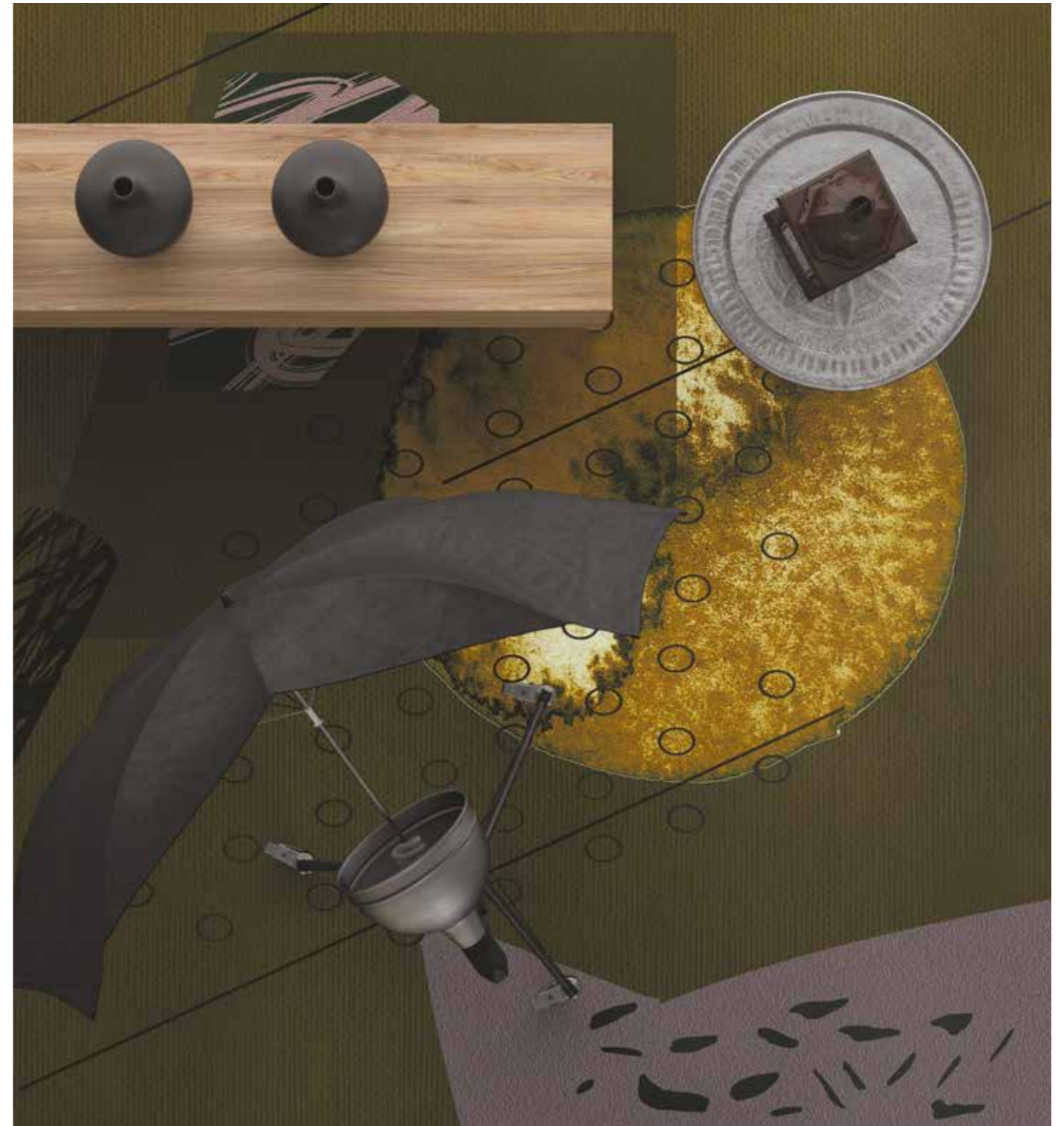


LM3.02.3 350 φ | 300x200 | 400x300 cm

AVAILABLE AS BROADLOOM 

# LM3.02

L A C K M E T H O D S



# LM3.03

L A C K M E T H O D S

○ AVAILABLE AS BROADLOOM



350 φ | 300x200 | 400x300 cm LM3.03.1



350 φ | 300x200 | 400x300 cm LM3.03.2



350 φ | 300x200 | 400x300 cm LM3.03.3



LM3.04.1 350 φ | 300x200 | 400x300 cm



LM3.04.2 350 φ | 300x200 | 400x300 cm



LM3.04.3 350 φ | 300x200 | 400x300 cm

AVAILABLE AS BROADLOOM 

# LM3.04

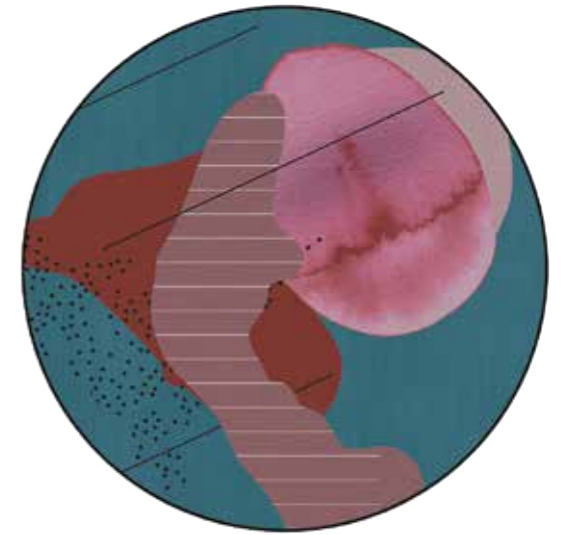
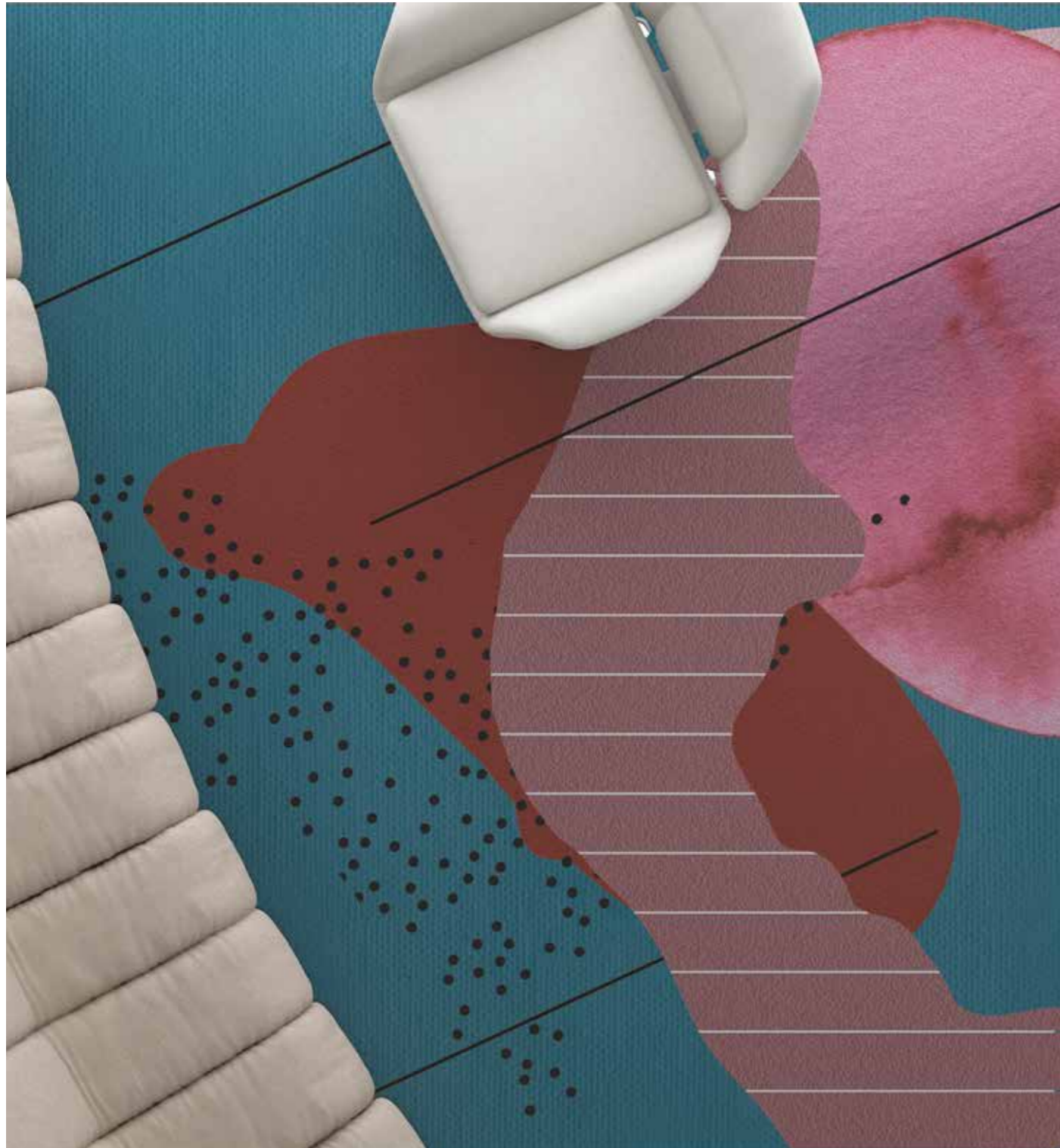
L A C K M E T H O D S



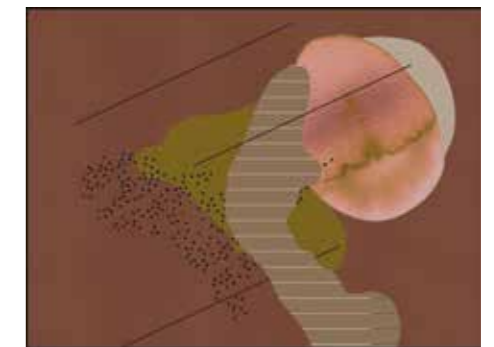
# LM3.05

L A C K M E T H O D S

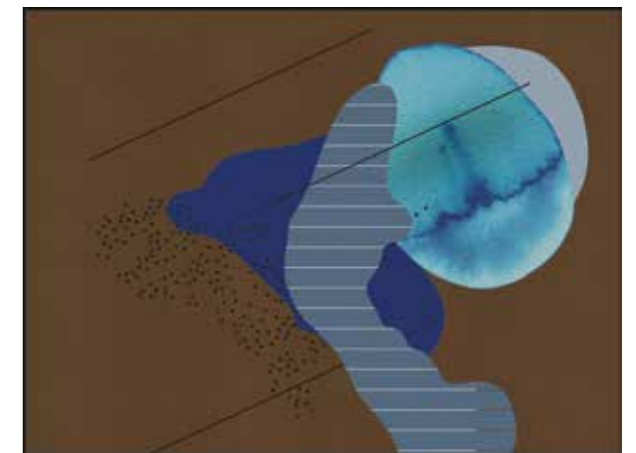
○ AVAILABLE AS BROADLOOM



350 φ | 300x200 | 400x300 cm LM3.05.1



350 φ | 300x200 | 400x300 cm LM3.05.2



350 φ | 300x200 | 400x300 cm LM3.05.3



LM3.06.1 350 φ | 300x200 | 400x300 cm



LM3.06.2 350 φ | 300x200 | 400x300 cm

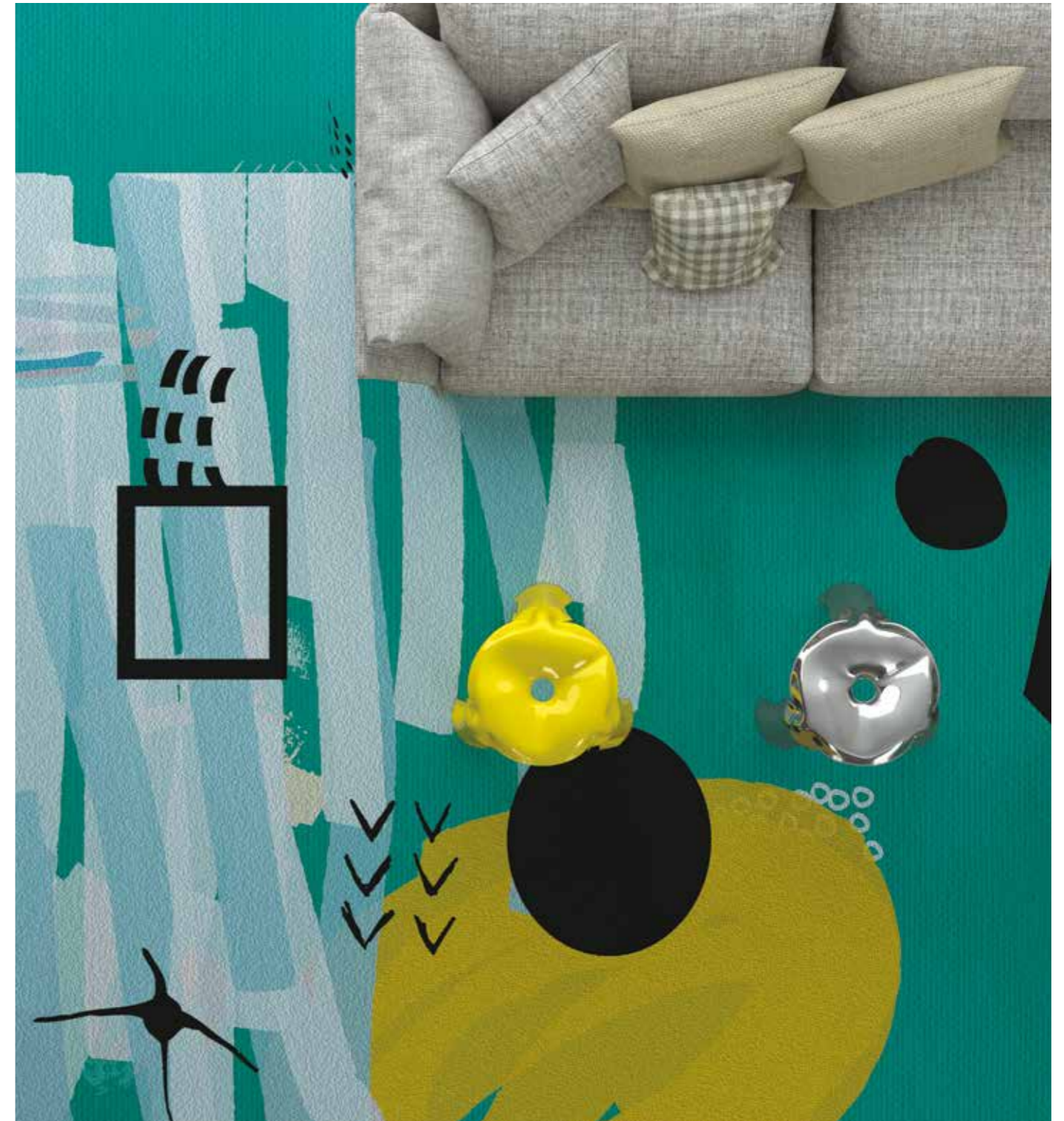


LM3.06.3 350 φ | 300x200 | 400x300 cm

AVAILABLE AS BROADLOOM 

# LM3.06

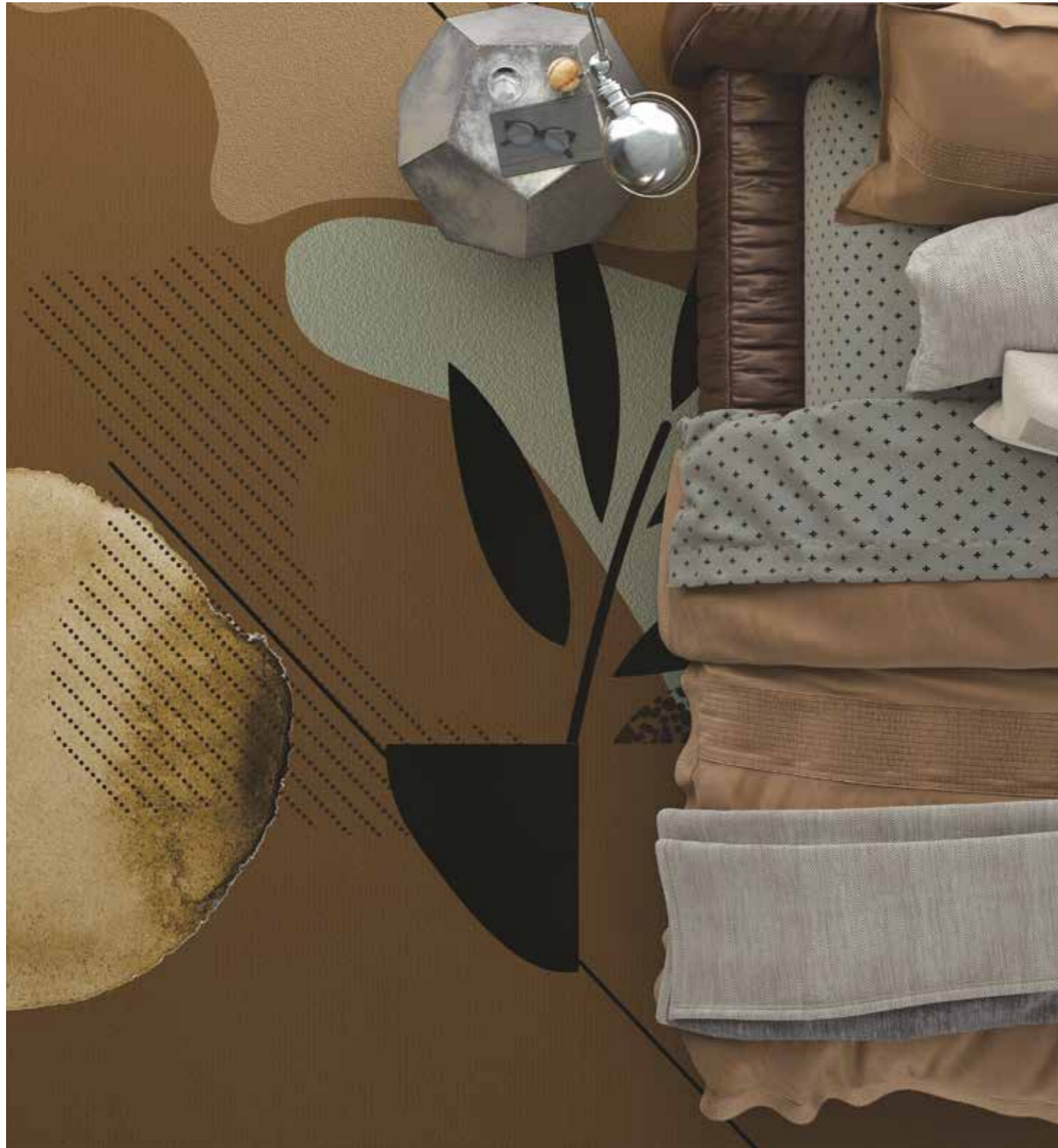
L A C K M E T H O D S



# LM3.07

L A C K M E T H O D S

○ AVAILABLE AS BROADLOOM



350 φ | 300x200 | 400x300 cm LM3.07.1



350 φ | 300x200 | 400x300 cm LM3.07.2



350 φ | 300x200 | 400x300 cm LM3.07.3





LM3.08.1 350 φ | 300x200 | 400x300 cm



LM3.08.2 350 φ | 300x200 | 400x300 cm



LM3.08.3 350 φ | 300x200 | 400x300 cm

AVAILABLE AS BROADLOOM 

# LM3.08

L A C K M E T H O D S



C P

3

COLLECTION

C L I P P R O F I L E S

# CP3.01

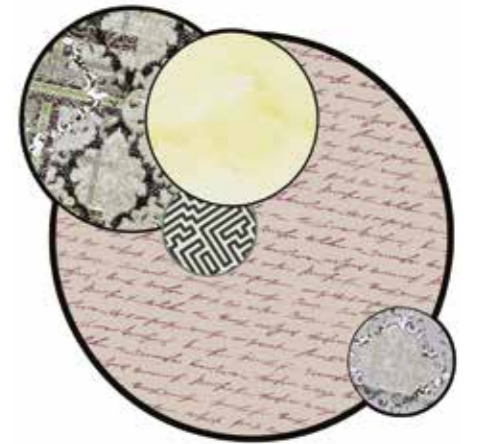
CLIP PROFILES



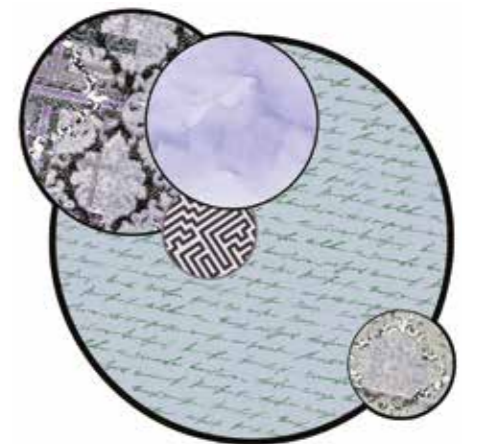
400x300 cm CP3.01.1



400x300 cm CP3.01.2

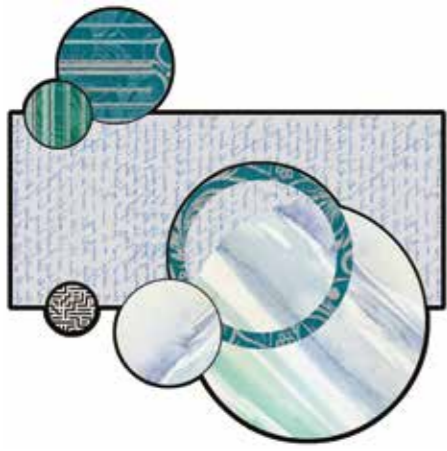


400x300 cm CP3.01.3

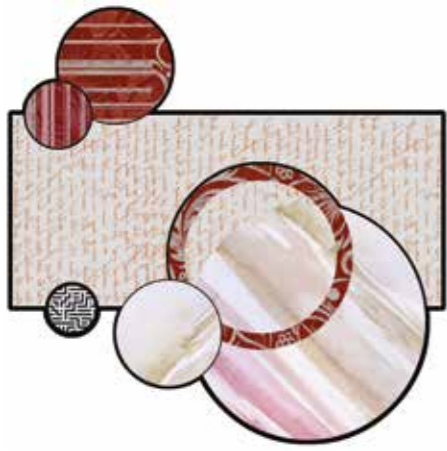


# CP3.02

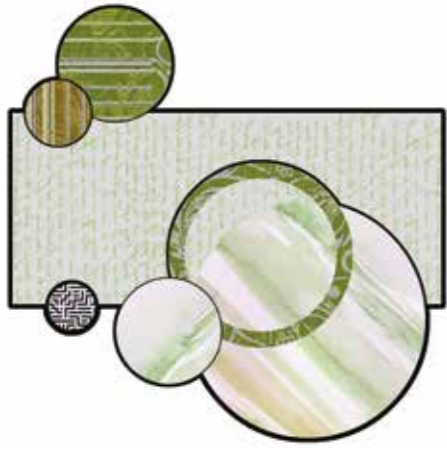
CLIP PROFILES



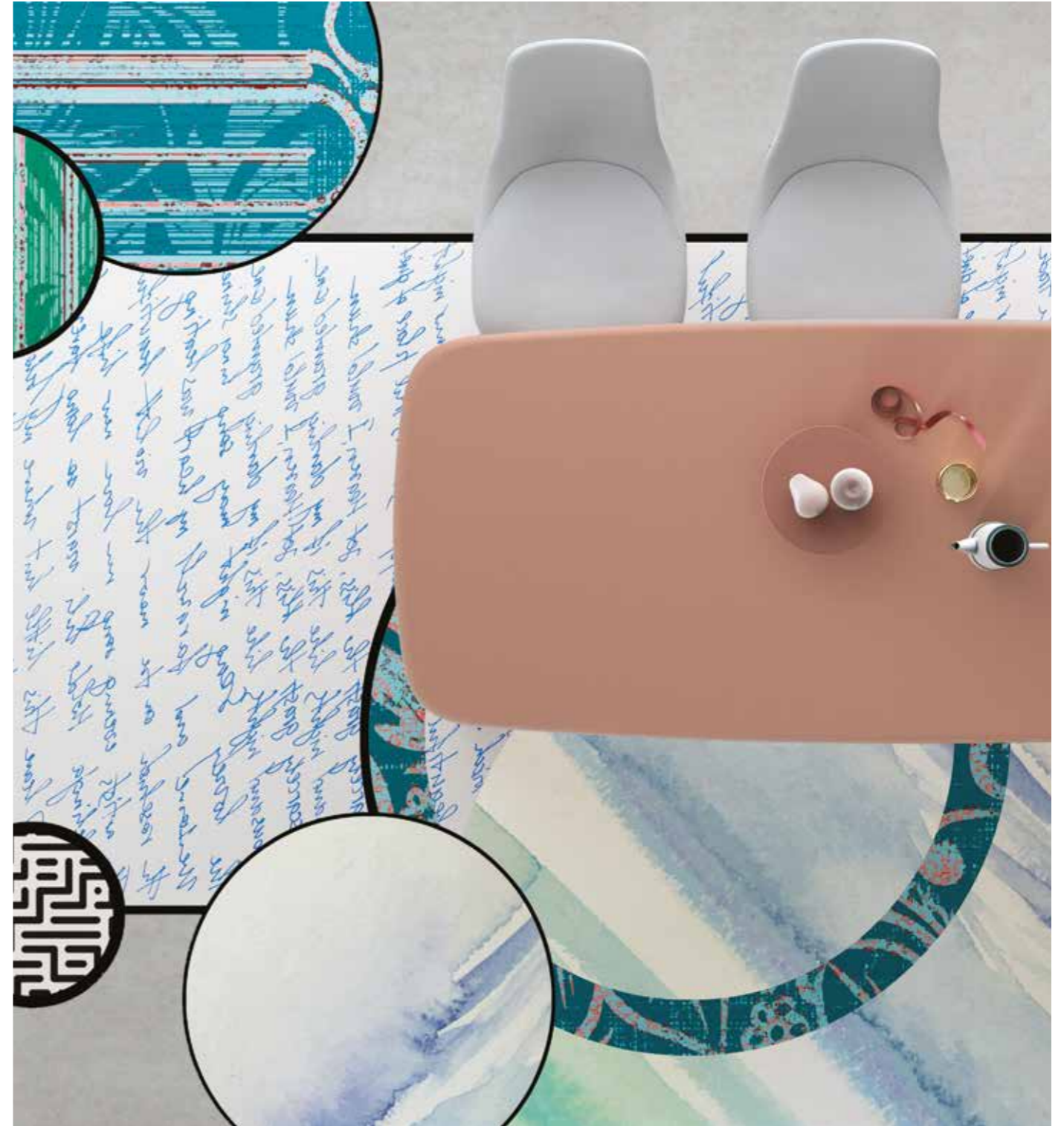
CP3.02.1 400x300 cm



CP3.02.2 400x300 cm



CP3.02.3 400x300 cm



# CP3.03

CLIP PROFILES



400x300 cm CP3.03.1



400x300 cm CP3.03.2

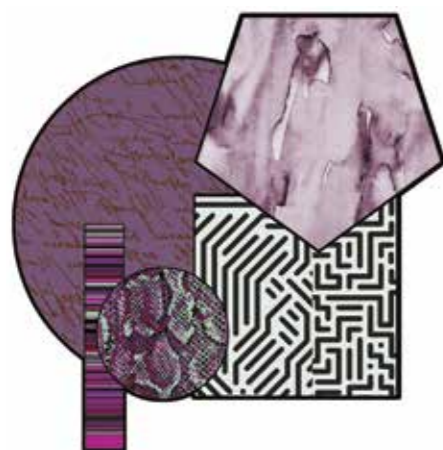


400x300 cm CP3.03.3

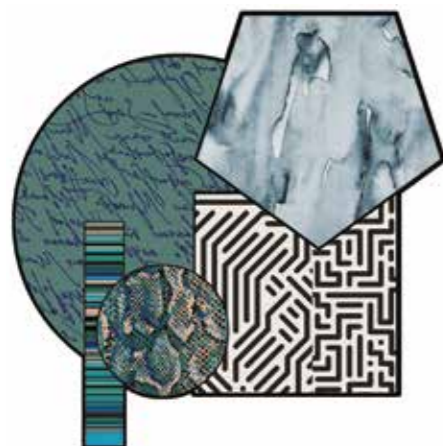




CP3.04.1 400x300 cm



CP3.04.2 400x300 cm



CP3.04.3 400x300 cm

# CP3.04

CLIP PROFILES

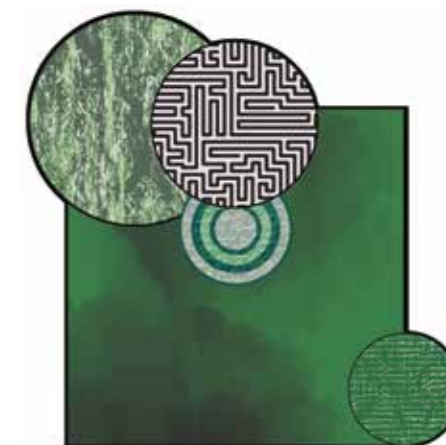


# CP3.05

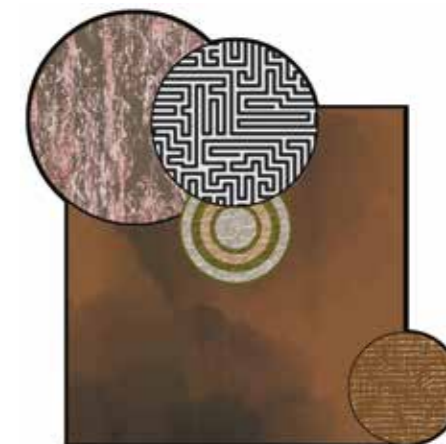
CLIP PROFILES



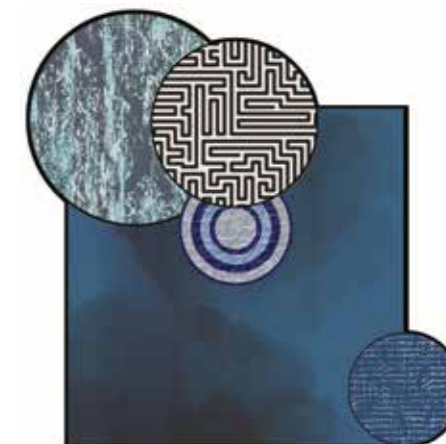
400x300 cm CP3.05.1



400x300 cm CP3.05.2



400x300 cm CP3.05.3



# CP3.06

CLIP PROFILES



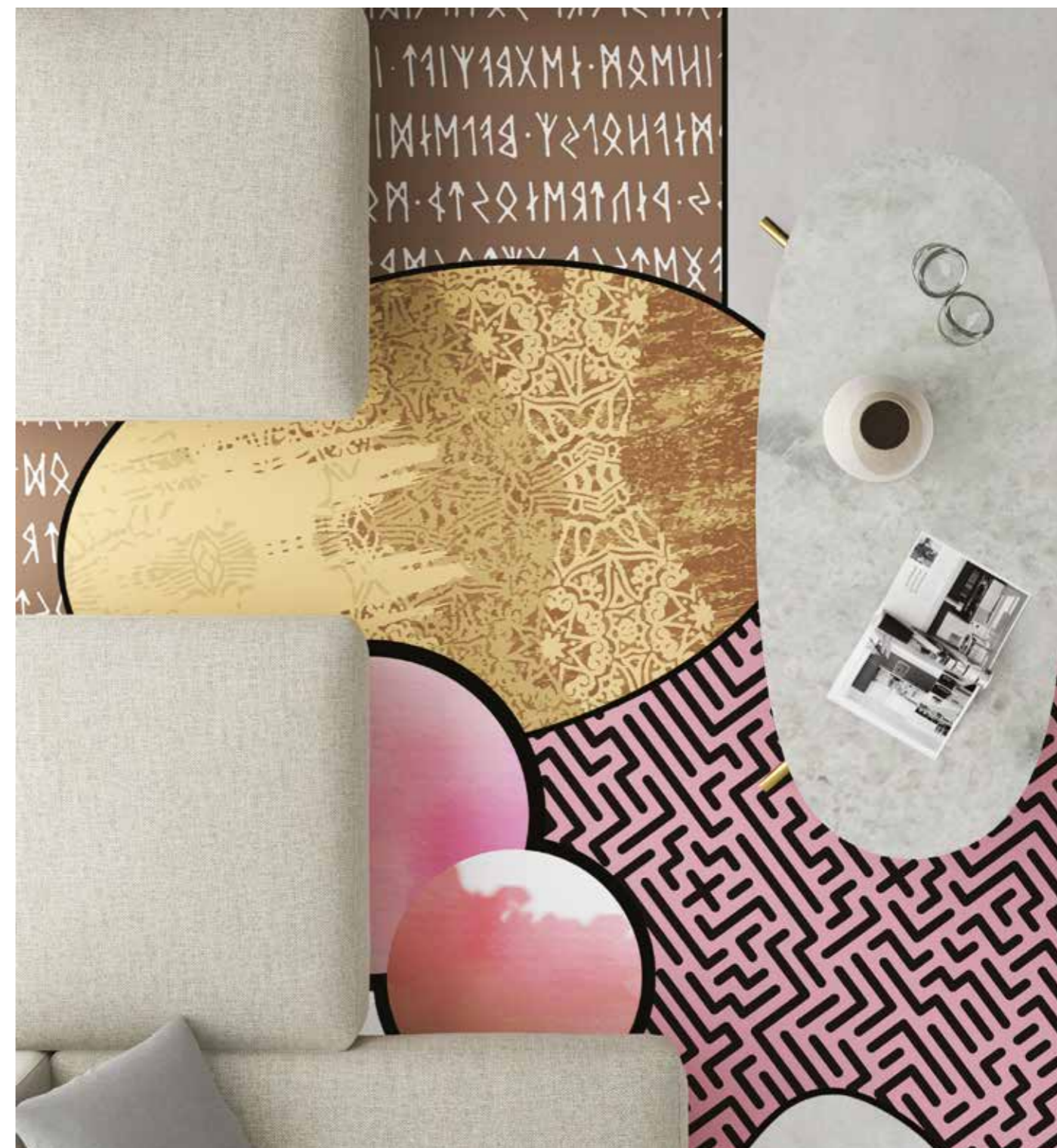
CP3.06.1 400x300 cm



CP3.06.2 400x300 cm



CP3.06.3 400x300 cm





# CP3.07

CLIP PROFILES



400x300 cm CP3.07.1



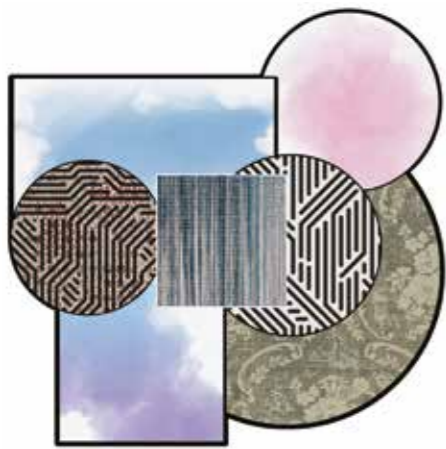
400x300 cm CP3.07.2



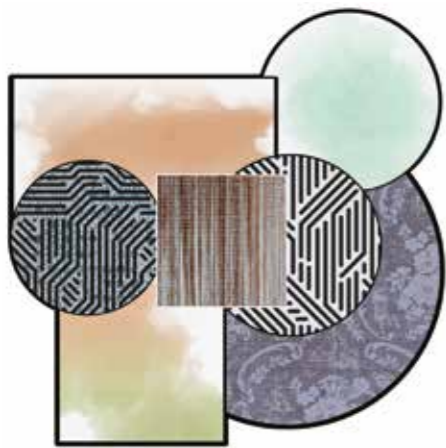
400x300 cm CP3.07.3

# CP3.08

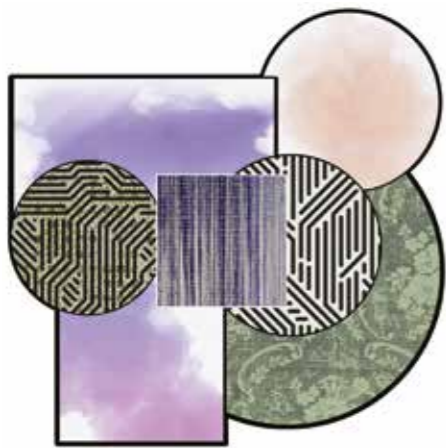
CLIP PROFILES



CP3.08.1 400x300 cm



CP3.08.2 400x300 cm



CP3.08.3 400x300 cm



G F

3

COLLECTION

GROOVE FLASHES

# GF3.01

GROOVE FLASHES



GF3.01.1 350 φ cm



GF3.01.2 350 φ cm



GF3.01.3 350 φ cm



D N

3

COLLECTION

DOMESTIC NATURE

# DN3.01

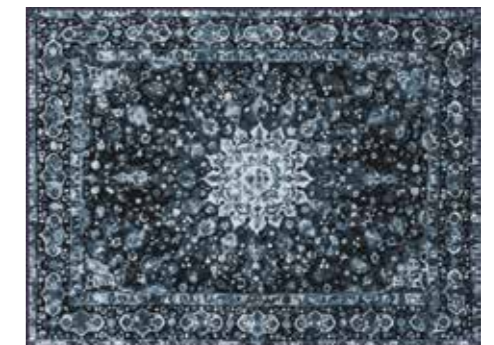
DOMESTIC NATURE

○ AVAILABLE AS BROADLOOM



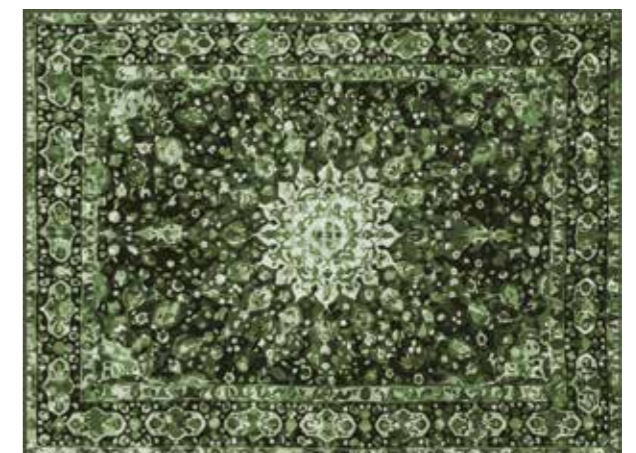
350 φ | 300x200 | 400x300 cm

DN3.01.1



350 φ | 300x200 | 400x300 cm

DN3.01.2



350 φ | 300x200 | 400x300 cm

DN3.01.3

S  
3

L

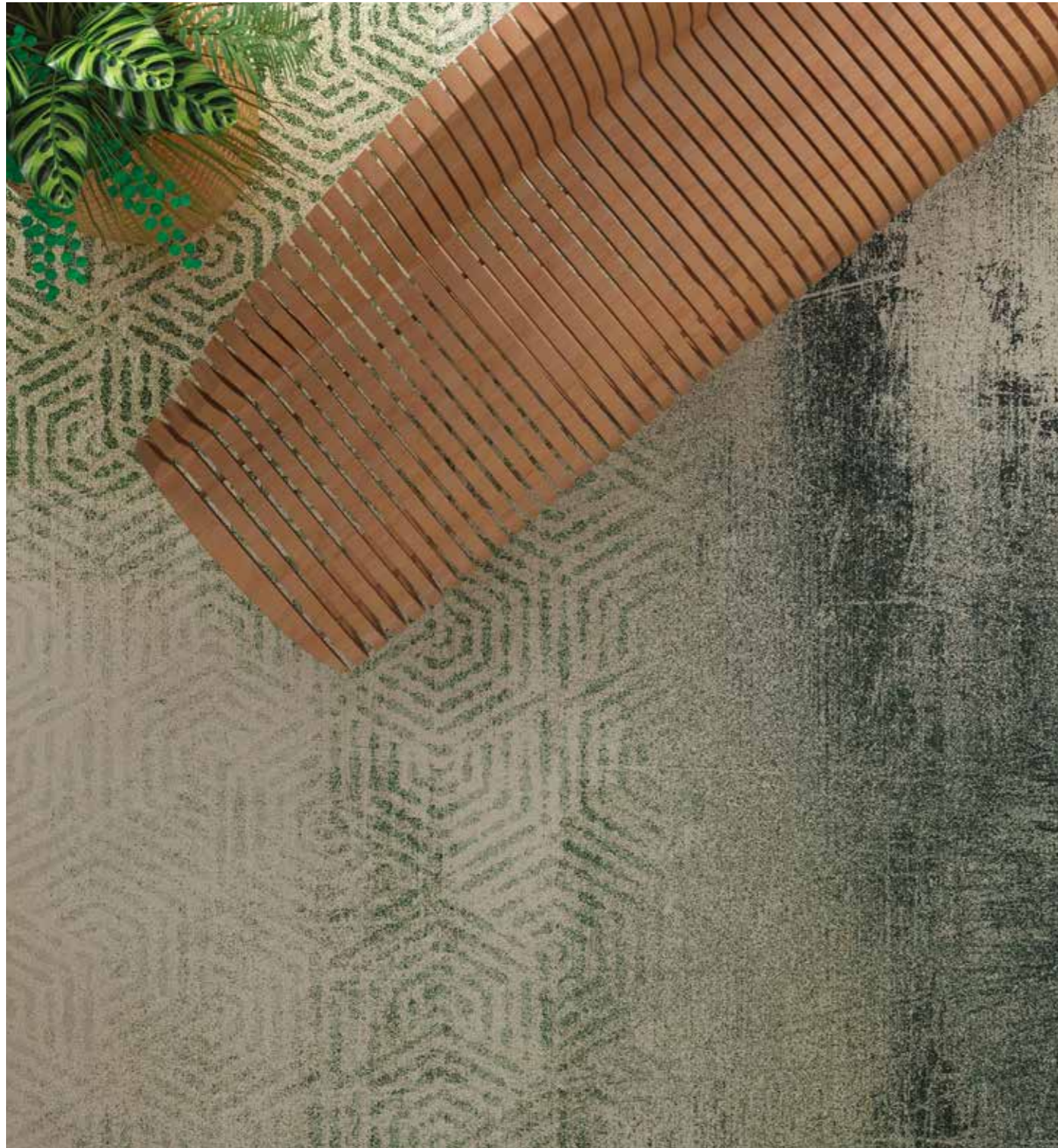
COLLECTION

S L A S H L I M I T S

# SL3.01

S L A S H L I M I T S

○ AVAILABLE AS BROADLOOM



350 φ | 300x200 | 400x300 cm

SL3.01.1



350 φ | 300x200 | 400x300 cm

SL3.01.2



350 φ | 300x200 | 400x300 cm

SL3.01.3





SL3.02.1 350 φ | 300x200 | 400x300 cm



SL3.02.2 350 φ | 300x200 | 400x300 cm



SL3.02.3 350 φ | 300x200 | 400x300 cm

AVAILABLE AS BROADLOOM 

# SL3.02

SLASH LIMITS



# SL3.03

S L A S H L I M I T S

○ AVAILABLE AS BROADLOOM



350  $\phi$  | 300x200 | 400x300 cm

SL3.03.1



350  $\phi$  | 300x200 | 400x300 cm

SL3.03.2



350  $\phi$  | 300x200 | 400x300 cm

SL3.03.3



SL3.04.1 350 φ | 300x200 | 400x300 cm



SL3.04.2 350 φ | 300x200 | 400x300 cm

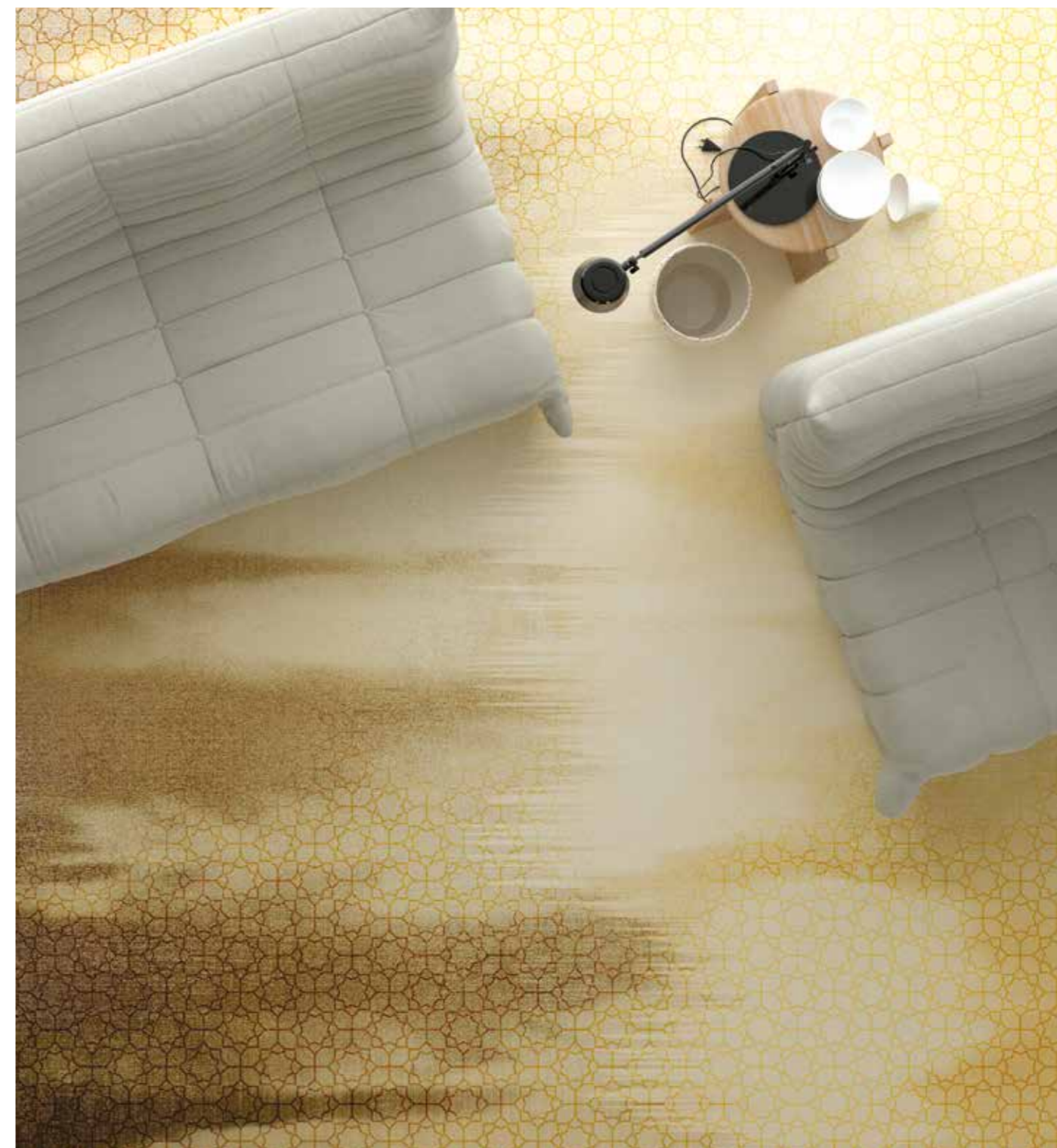


SL3.04.3 350 φ | 300x200 | 400x300 cm

AVAILABLE AS BROADLOOM 

# SL3.04

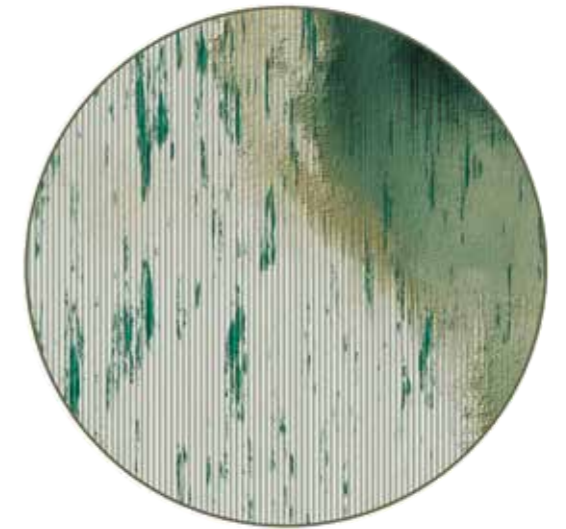
S L A S H L I M I T S



# SL3.05

S L A S H L I M I T S

○ AVAILABLE AS BROADLOOM



350  $\phi$  | 300x200 | 400x300 cm

SL3.05.1



350  $\phi$  | 300x200 | 400x300 cm

SL3.05.2



350  $\phi$  | 300x200 | 400x300 cm

SL3.05.3



SL3.06.1 350 φ | 300x200 | 400x300 cm



SL3.06.2 350 φ | 300x200 | 400x300 cm



SL3.06.3 350 φ | 300x200 | 400x300 cm

AVAILABLE AS BROADLOOM 

# SL3.06

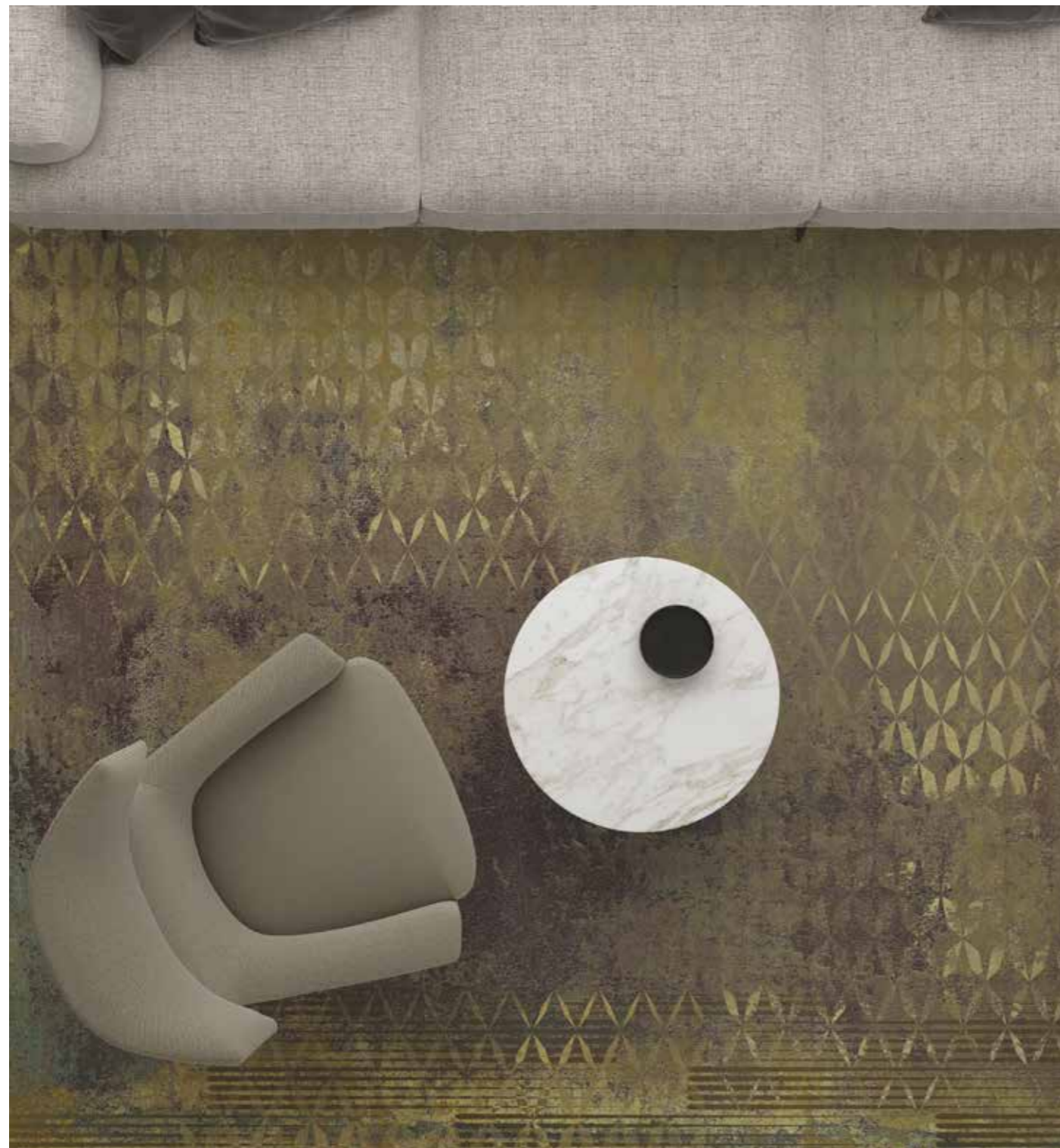
S L A S H L I M I T S



# SL3.07

SLASH LIMITS

○ AVAILABLE AS BROADLOOM



350  $\phi$  | 300x200 | 400x300 cm

SL3.07.1



350  $\phi$  | 300x200 | 400x300 cm

SL3.07.2



350  $\phi$  | 300x200 | 400x300 cm

SL3.07.3



SL3.08.1 350 φ | 300x200 | 400x300 cm



SL3.08.2 350 φ | 300x200 | 400x300 cm



SL3.08.3 350 φ | 300x200 | 400x300 cm

AVAILABLE AS BROADLOOM 

# SL3.08

SLASH LIMITS



D C

3

COLLECTION

DEEP COMPLEXES



# DC3.01

DEEP COMPLEXES



400x270 cm DC3.01.1



400x270 cm DC3.01.2



400x270 cm DC3.01.3

# DC3.02

DEEP COMPLEXES



DC3.02.1 400x300 cm



DC3.02.2 400x300 cm



DC3.02.3 400x300 cm

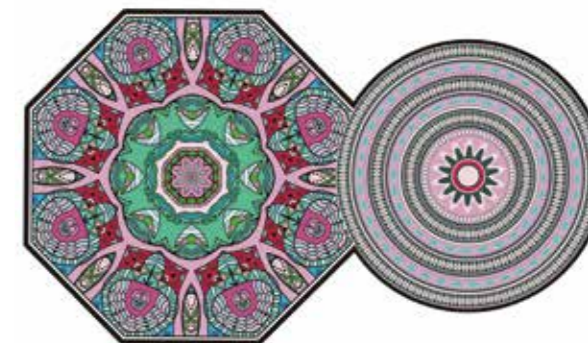


# DC3.03

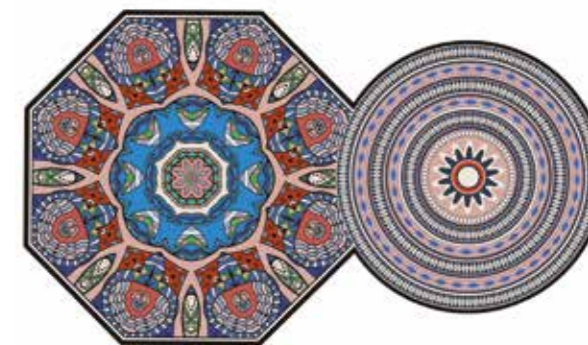
DEEP COMPLEXES



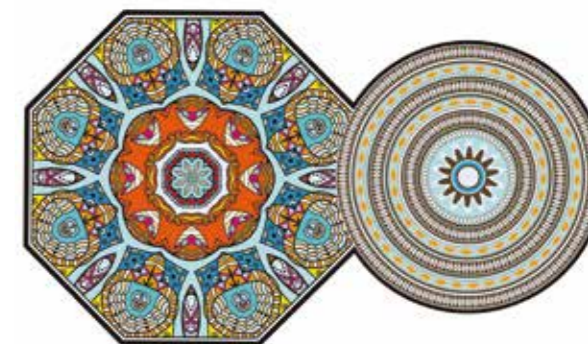
400x230 cm DC3.03.1



400x230 cm DC3.03.2



400x230 cm DC3.03.3





DC3.04.1 400x250 cm



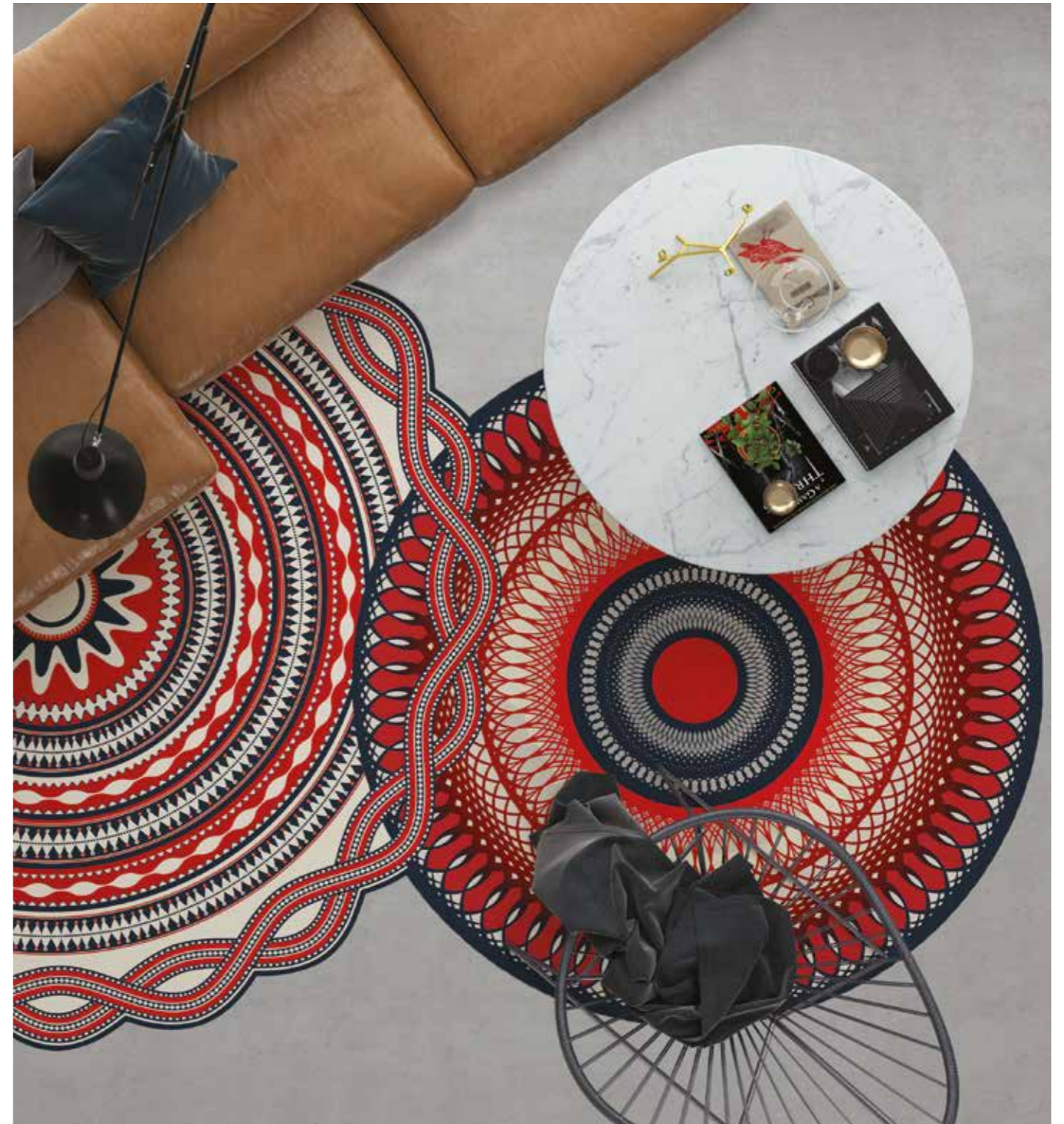
DC3.04.2 400x250 cm



DC3.04.3 400x250 cm

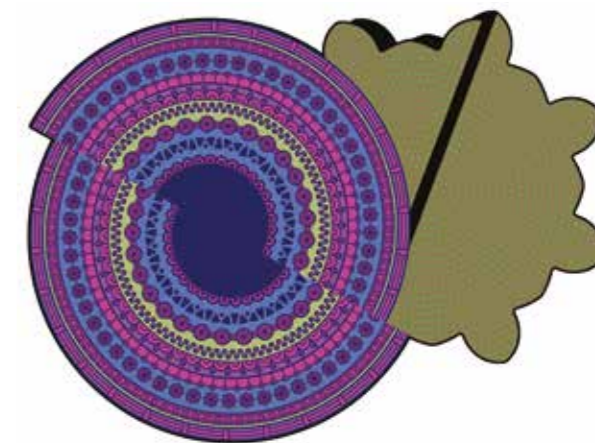
# DC3.04

DEEP COMPLEXES

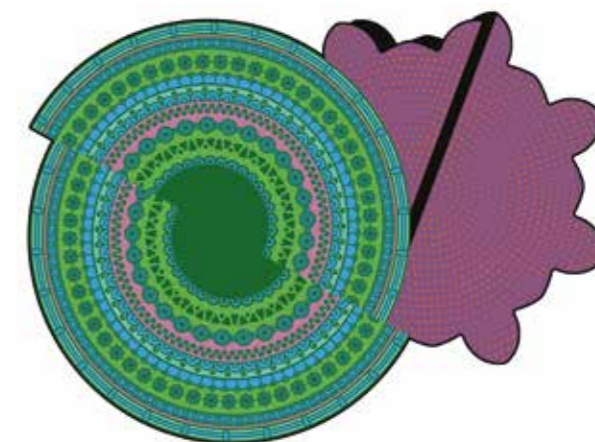


# DC3.05

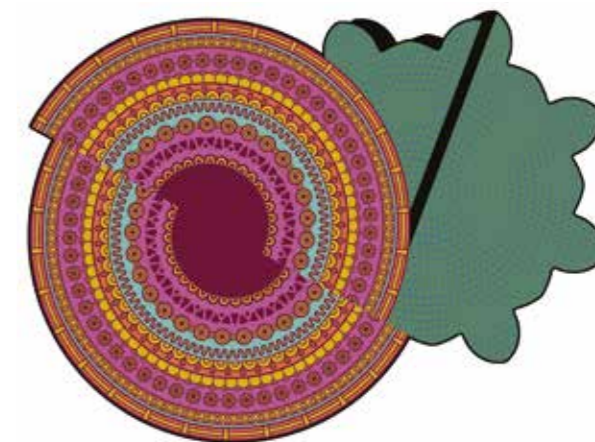
DEEP COMPLEXES



400x300 cm DC3.05.1



400x300 cm DC3.05.2



400x300 cm DC3.05.3

# DC3.06

DEEP COMPLEXES



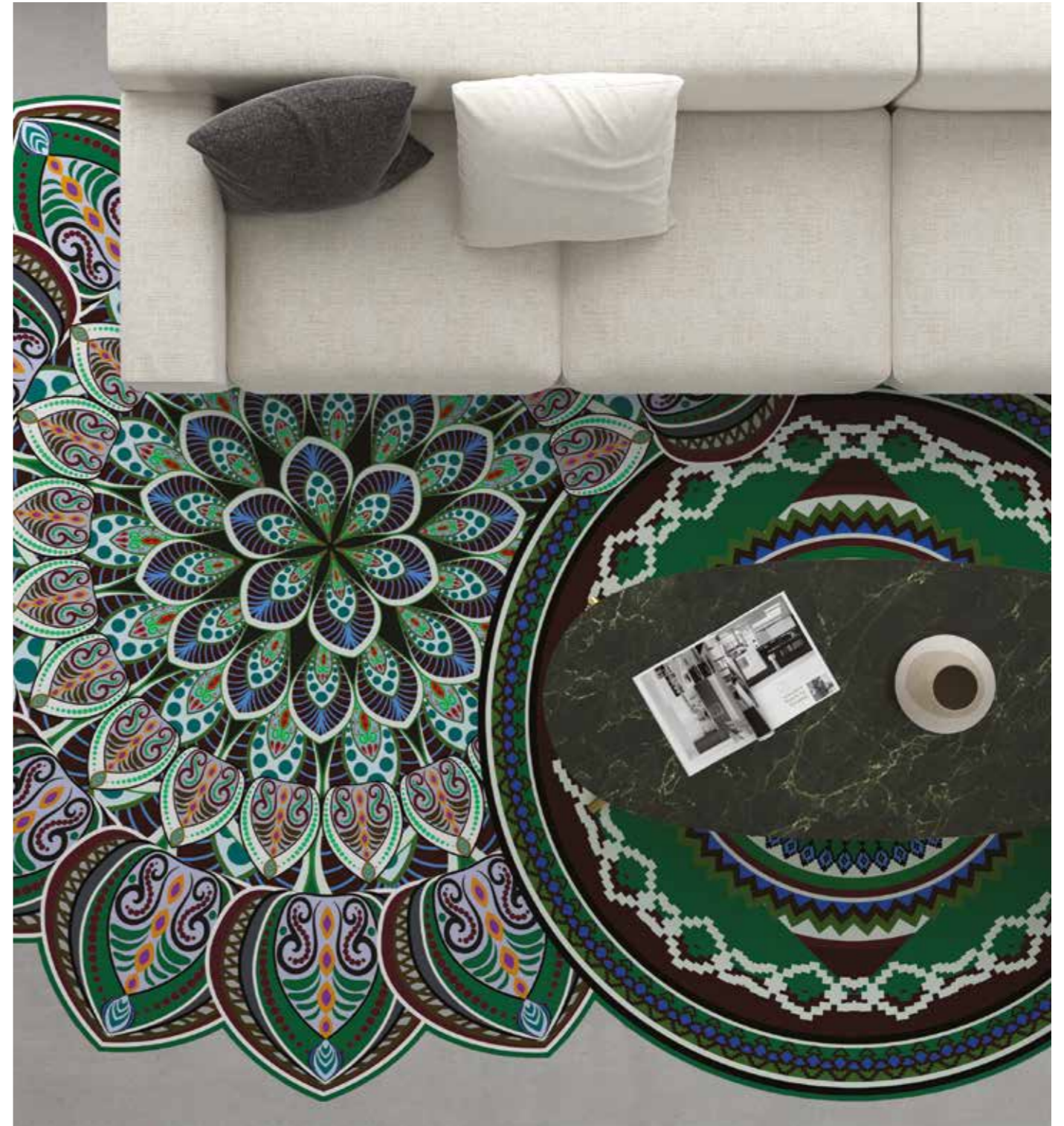
DC3.06.1 400x300 cm



DC3.06.2 400x300 cm



DC3.06.3 400x300 cm

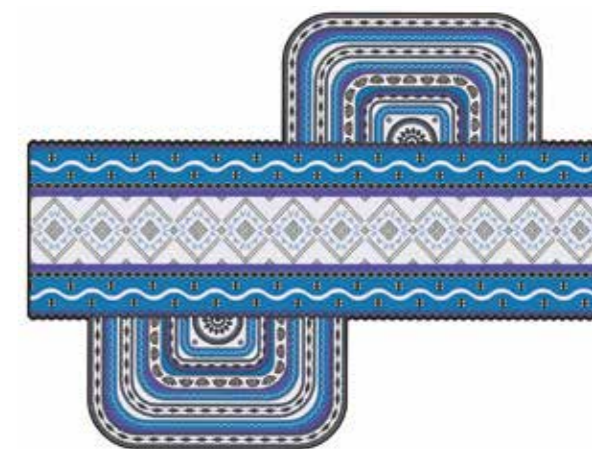


# DC3.07

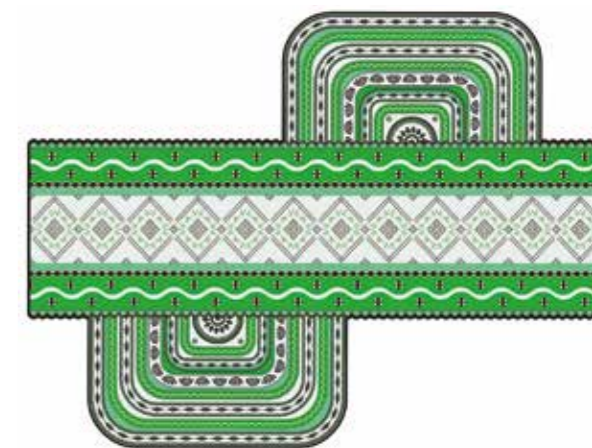
DEEP COMPLEXES



400x300 cm DC3.07.1



400x300 cm DC3.07.2

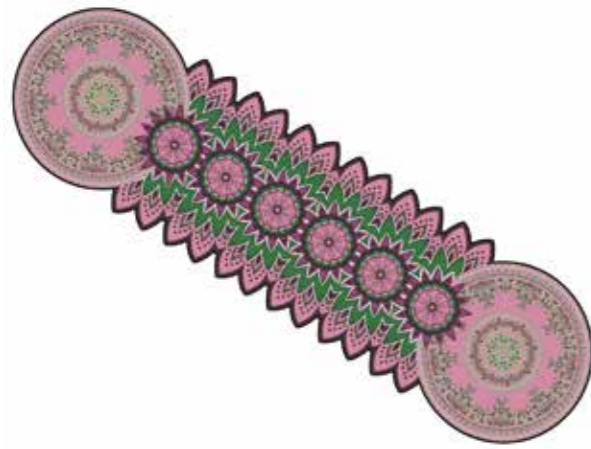


400x300 cm DC3.07.3

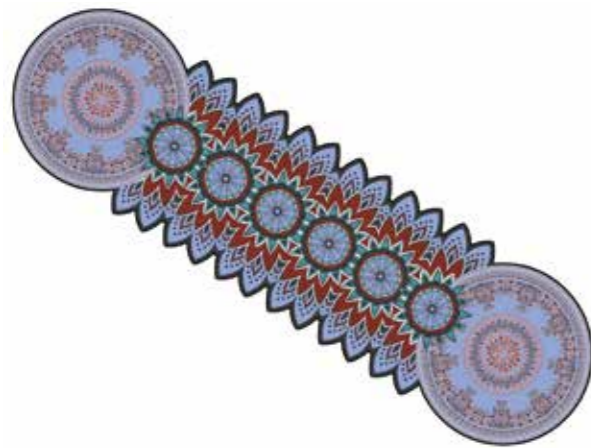


# DC3.08

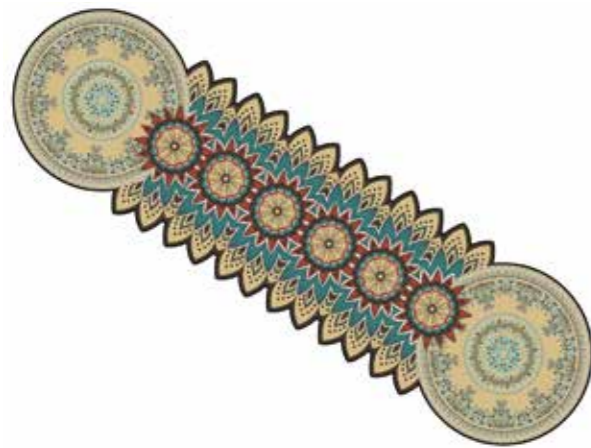
DEEP COMPLEXES



DC3.08.1 400x130 cm



DC3.08.2 400x130 cm



DC3.08.3 400x130 cm





O M

3

COLLECTION

O L D E N M A S T E R S

# OM3.01

OLDEN MASTERS

○ AVAILABLE AS BROADLOOM



350 φ | 300x200 | 400x300 cm OM3.01.1



350 φ | 300x200 | 400x300 cm OM3.01.2



350 φ | 300x200 | 400x300 cm OM3.01.3



OM3.02.1 350 φ | 300x200 | 400x300 cm



OM3.02.2 350 φ | 300x200 | 400x300 cm

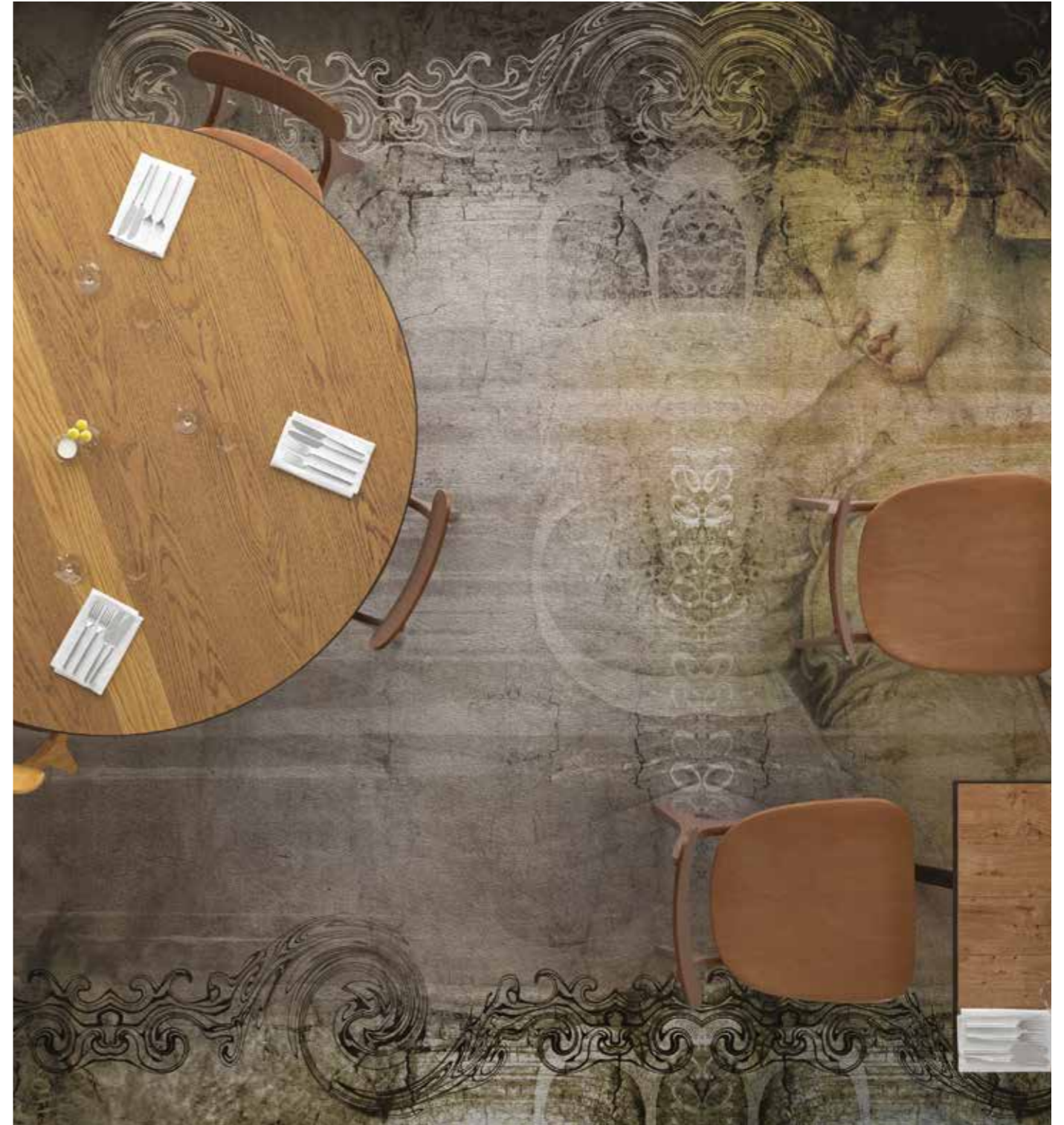


OM3.02.3 350 φ | 300x200 | 400x300 cm

AVAILABLE AS BROADLOOM 

# OM3.02

OLDEN MASTERS



# OM3.03

OLDEN MASTERS

○ AVAILABLE AS BROADLOOM



350 φ | 300x200 | 400x300 cm OM3.03.1



350 φ | 300x200 | 400x300 cm OM3.03.2



350 φ | 300x200 | 400x300 cm OM3.03.3



OM3.04.1 350 φ | 300x200 | 400x300 cm



OM3.04.2 350 φ | 300x200 | 400x300 cm



OM3.04.3 350 φ | 300x200 | 400x300 cm

AVAILABLE AS BROADLOOM 

# OM3.04

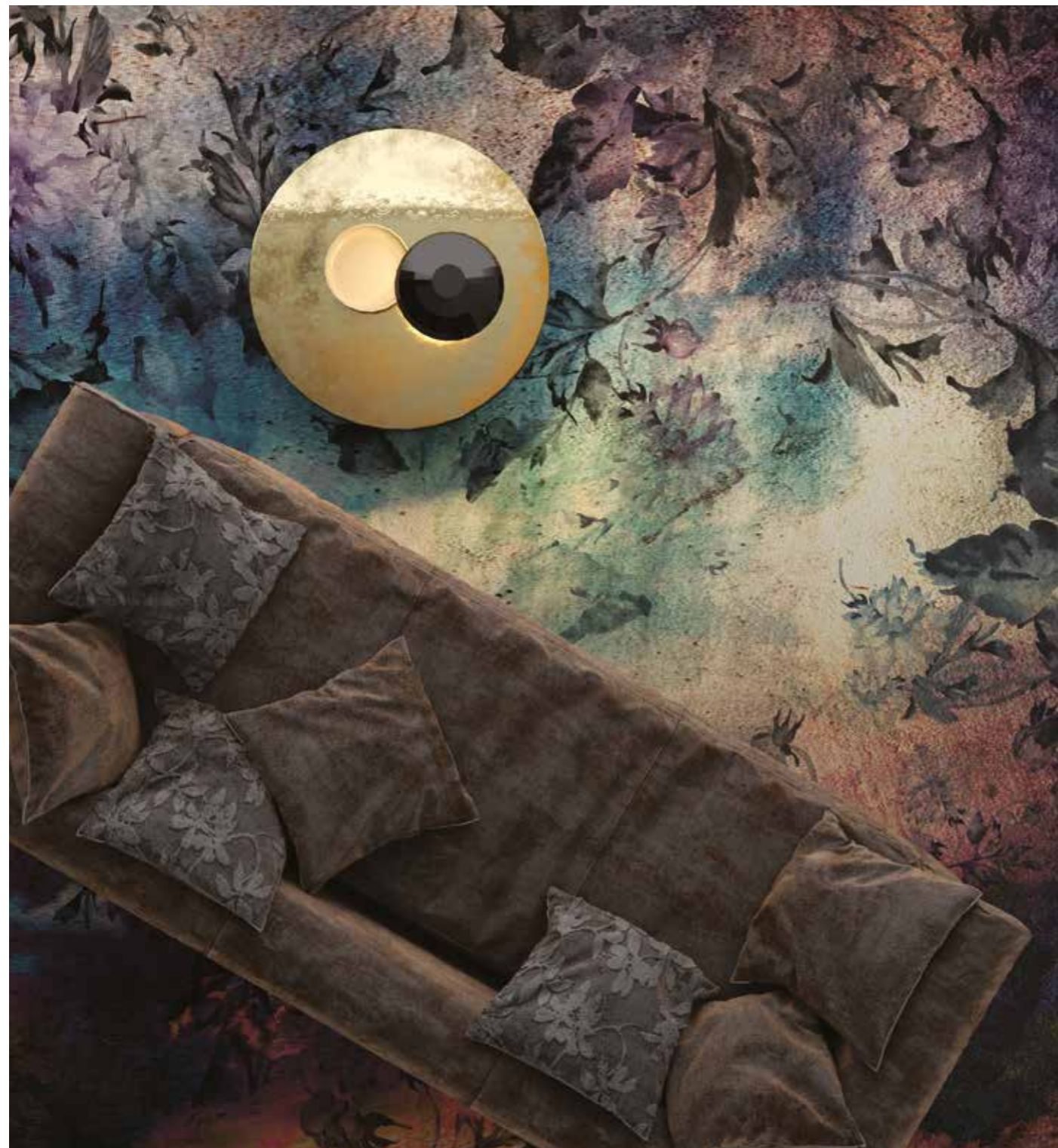
OLDEN MASTERS



# OM3.05

O L D E N M A S T E R S

○ AVAILABLE AS BROADLOOM



350 φ | 300x200 | 400x300 cm OM3.05.1



350 φ | 300x200 | 400x300 cm OM3.05.2



350 φ | 300x200 | 400x300 cm OM3.05.3



OM3.06.1 350 φ | 300x200 | 400x300 cm



OM3.06.2 350 φ | 300x200 | 400x300 cm



OM3.06.3 350 φ | 300x200 | 400x300 cm

AVAILABLE AS BROADLOOM 

# OM3.06

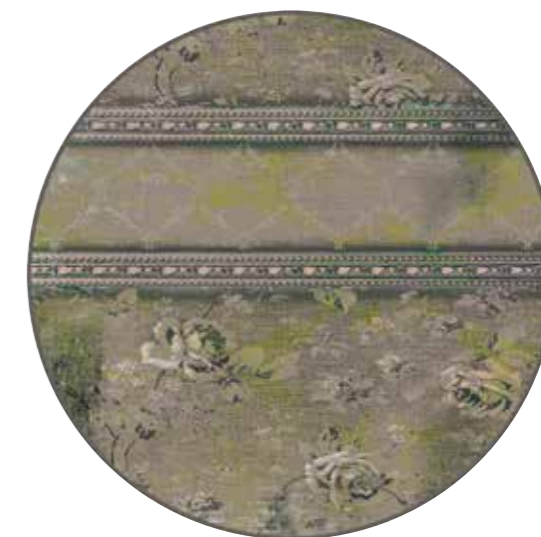
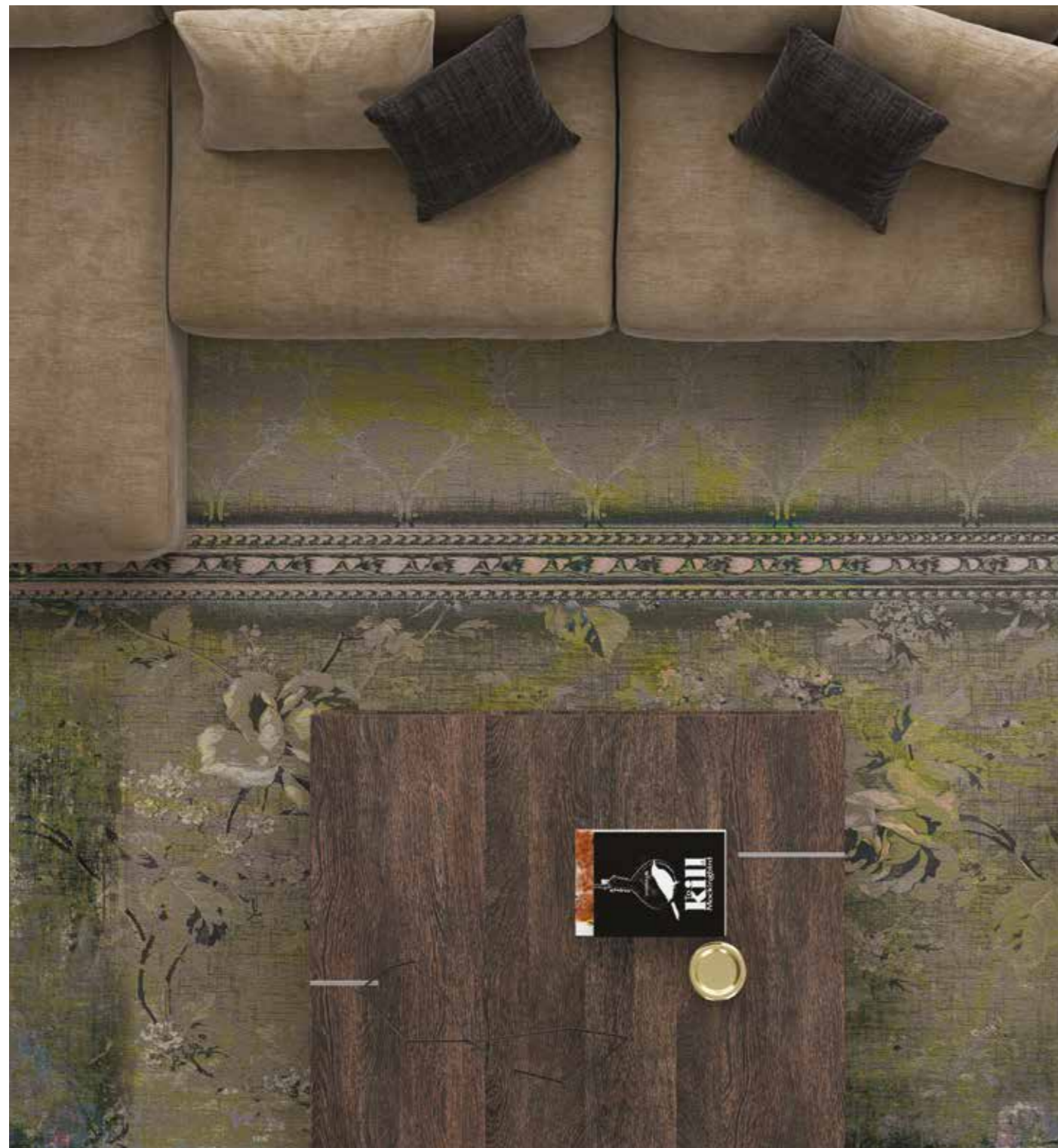
OLDEN MASTERS



# OM3.07

OLDEN MASTERS

○ AVAILABLE AS BROADLOOM



350 φ | 300x200 | 400x300 cm OM3.07.1

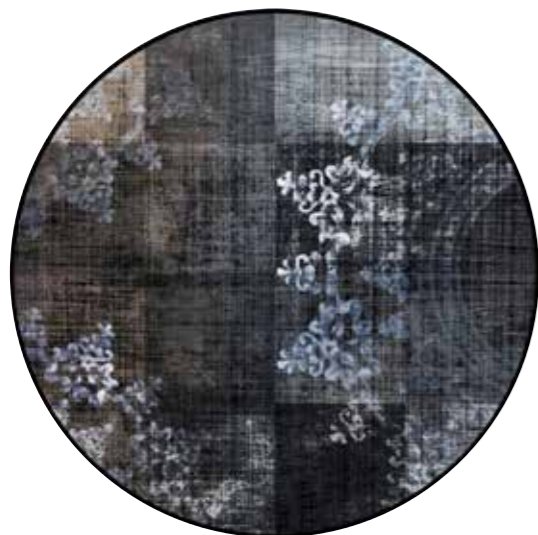


350 φ | 300x200 | 400x300 cm OM3.07.2

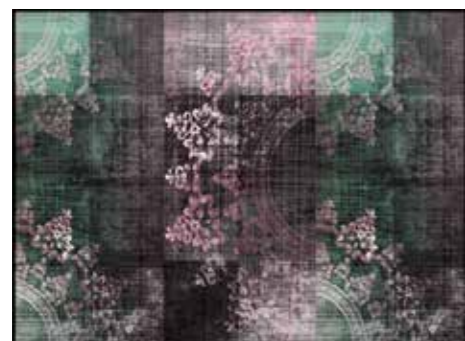


350 φ | 300x200 | 400x300 cm OM3.07.3

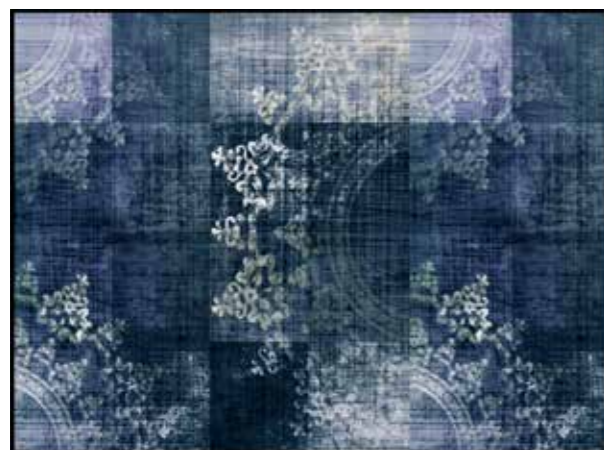




OM3.08.1 350 φ | 300x200 | 400x300 cm



OM3.08.2 350 φ | 300x200 | 400x300 cm



OM3.08.3 350 φ | 300x200 | 400x300 cm

AVAILABLE AS BROADLOOM 

# OM3.08

OLDEN MASTERS



N T

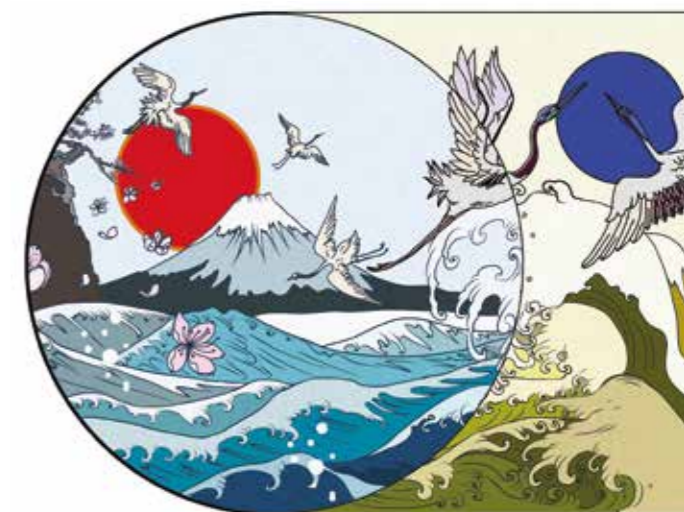
3

COLLECTION

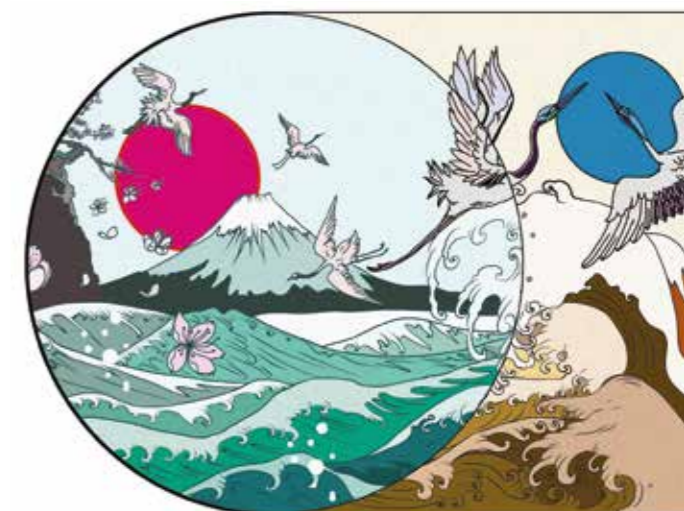
N E T T R O L L S

# NT3.01

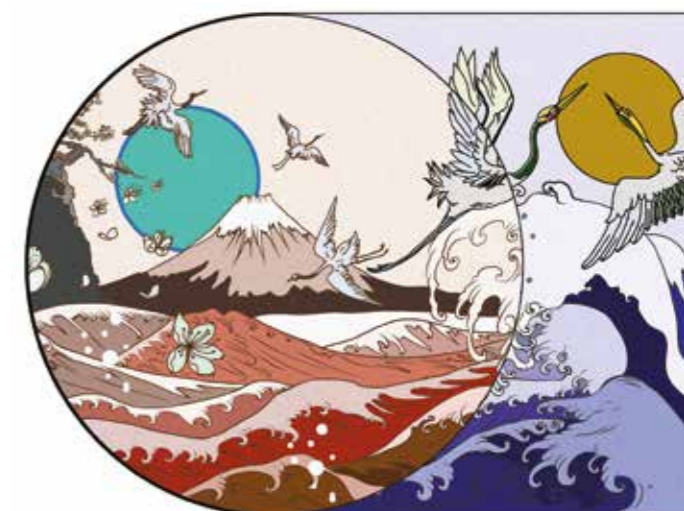
NET TROLLS



400x400 cm NT3.01.1



400x400 cm NT3.01.2



400x400 cm NT3.01.3

# NT3.02

NET TROLLS



NT3.02.1 400x400 cm



NT3.02.2 400x400 cm



NT3.02.3 400x400 cm



# NT3.03

NET TROLLS



400x330 cm NT3.03.1



400x330 cm NT3.03.2



400x330 cm NT3.03.3



NT3.04.1 400x300 cm



NT3.04.2 400x300 cm



NT3.04.3 400x300 cm

# NT3.04

NET TROLLS



# NT3.05

NET TROLLS



400x340 cm NT3.05.1



400x340 cm NT3.05.2



400x340 cm NT3.05.3





NT3.06.1 400x340 cm



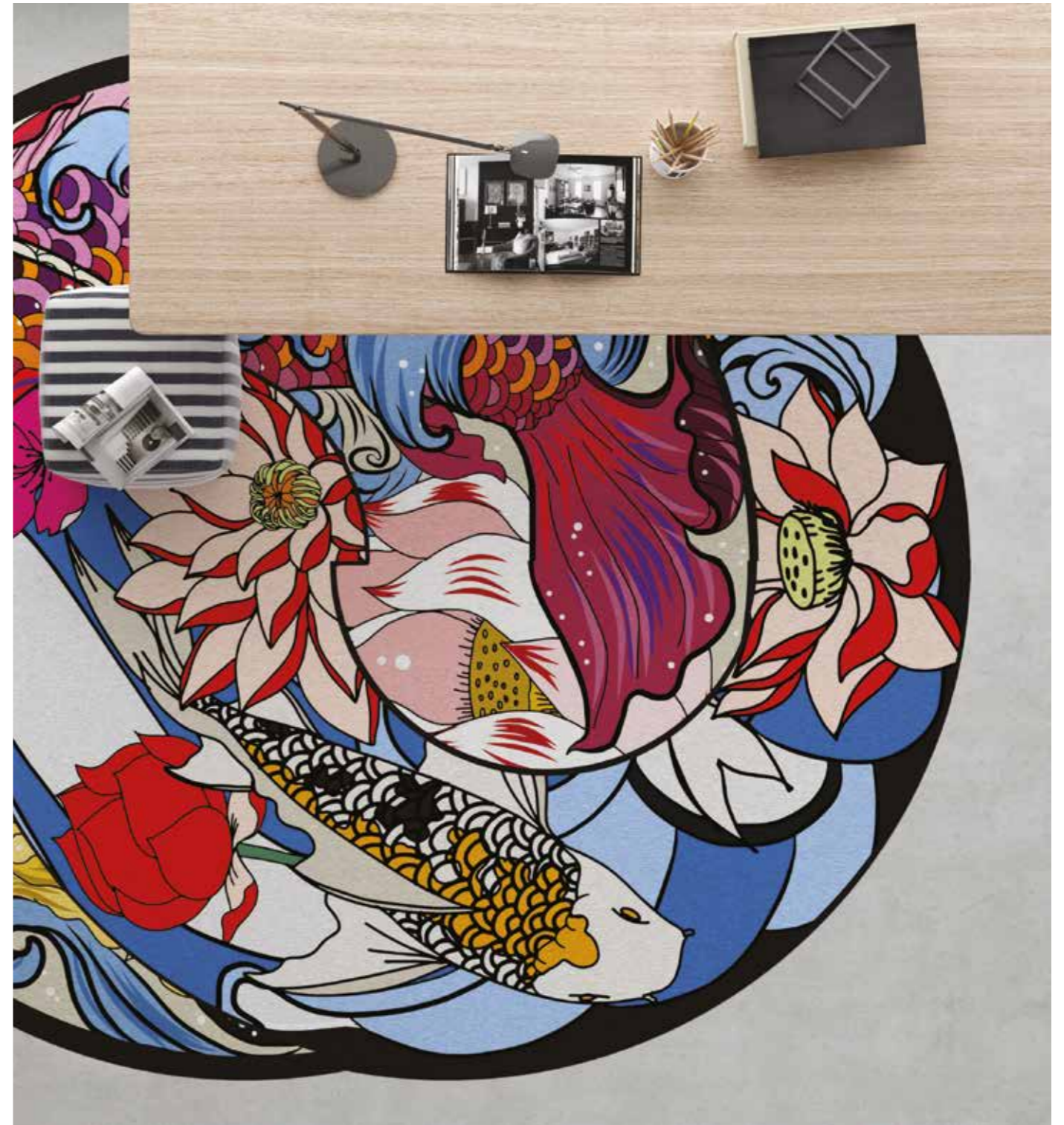
NT3.06.2 400x340 cm



NT3.06.3 400x340 cm

# NT3.06

NET TROLLS





# NT3.07

NET TROLLS



400x300 cm NT3.07.1



400x300 cm NT3.07.2



400x300 cm NT3.07.3

NT3.08.1 400  $\phi$  cmNT3.08.2 400  $\phi$  cmNT3.08.3 400  $\phi$  cm

# NT3.08

NET TROLLS



C L

3

COLLECTION

C O R A L L O S S



CL3.01.1 350 φ | 300x200 | 400x300 cm



CL3.01.2 350 φ | 300x200 | 400x300 cm



CL3.01.3 350 φ | 300x200 | 400x300 cm

# CL3.01

C O R A L L O S S



R F

3

COLLECTION

RECKON FIGURES



RF3.01.1 350 φ cm



RF3.01.2 350 φ cm



RF3.01.3 350 φ cm

# RF3.01

RECKON FIGURES



C C

3

COLLECTION

C O O L C U T S

# CC3.01

C O O L C U T S



350  $\phi$  | 300x200 | 400x300 cm CC3.01.1



350  $\phi$  | 300x200 | 400x300 cm CC3.01.2



350  $\phi$  | 300x200 | 400x300 cm CC3.01.3



# CC3.02

C O O L C U T S



CC3.02.1 350 φ | 300x200 | 400x300 cm



CC3.02.2 350 φ | 300x200 | 400x300 cm



CC3.02.3 350 φ | 300x200 | 400x300 cm



# CC3.03

C O O L C U T S



350 φ | 300x200 | 400x300 cm CC3.03.1



350 φ | 300x200 | 400x300 cm CC3.03.2



350 φ | 300x200 | 400x300 cm CC3.03.3

# CC3.04

C O O L C U T S



CC3.04.1 350 φ | 300x200 | 400x300 cm



CC3.04.2 350 φ | 300x200 | 400x300 cm



CC3.04.3 350 φ | 300x200 | 400x300 cm



# CC3.05

C O O L C U T S



350  $\phi$  | 300x200 | 400x300 cm

CC3.05.1



350  $\phi$  | 300x200 | 400x300 cm

CC3.05.2



350  $\phi$  | 300x200 | 400x300 cm

CC3.05.3

# CC3.06

C O O L C U T S



CC3.06.1 350 φ | 300x200 | 400x300 cm



CC3.06.2 350 φ | 300x200 | 400x300 cm

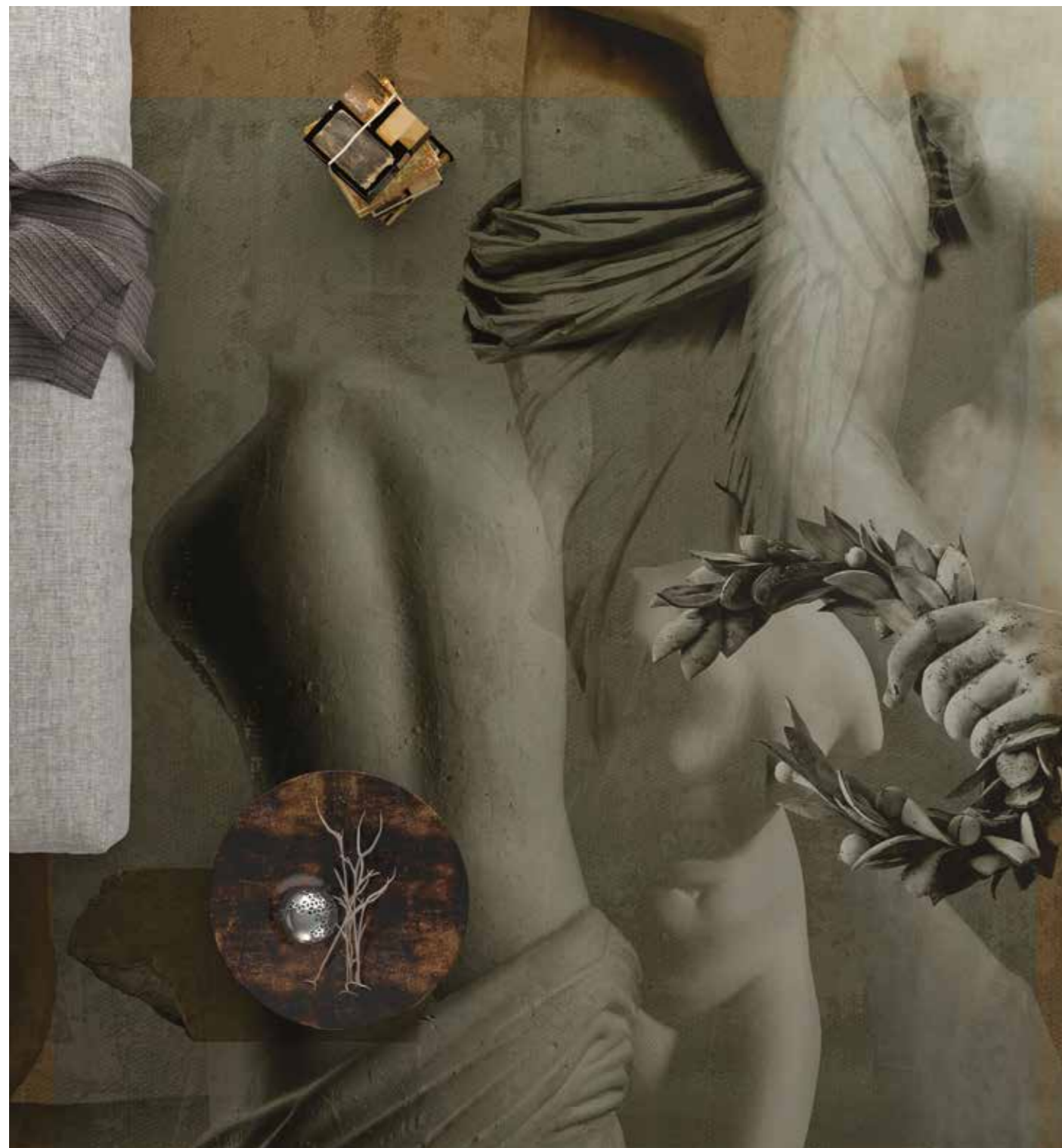


CC3.06.3 350 φ | 300x200 | 400x300 cm



# CC3.07

C O O L C U T S



350  $\phi$  | 300x200 | 400x300 cm CC3.07.1



350  $\phi$  | 300x200 | 400x300 cm CC3.07.2



350  $\phi$  | 300x200 | 400x300 cm CC3.07.3

# CC3.08

C O O L C U T S



CC3.08.1 350 φ | 300x200 | 400x300 cm



CC3.08.2 350 φ | 300x200 | 400x300 cm



CC3.08.3 350 φ | 300x200 | 400x300 cm



A L

3

COLLECTION

A N I M A L L E S S



# AL3.01

A N I M A L L E S S



300x200 | 400x300 cm

AL3.01.1



300x200 | 400x300 cm

AL3.01.2



3300x200 | 400x300 cm

AL3.01.3



technical  
specifications.

# BROADLOOM PA SAXONY 2800

Identification	Standard	Product Data
Manufacturing process	DIN ISO 2424	Tufting 1/10"
Frontside structure	DIN ISO 2424	Cut pile / Saxony
Color	DIN ISO 2424	Chromojet Print
Pile material		100% Polyamid PA
Primary backing	DIN ISO 2424	PP Woven
Secondary backing	DIN ISO 2424	Felt backing
Pile weight	DIN ISO 2424	Approx. 1050 g/m <sup>2</sup>
Total weight	ISO 8543	Approx. 2800 g/m <sup>2</sup>
Pile height	ISO 1766	Approx. 5.5 mm
Total thickness	ISO 1765	Approx. 10,00 mm
Number of knots	ISO 1763	Approx. 213.300 /m <sup>2</sup>
Width	DIN 3018	Approx. 400 cm
Wear classification	EN 1307:2004	33 heavy contract
Comfort rating	EN 1307:2004	LC 4
Surface resistance	ISO 10965	Approx. Ω
Vertical resistance	ISO 10965	Approx. Ω
Sound absorption coefficient	ISO 11654:1997-07	Hz 125 250 500 1000 2000 4000 α <sub>p</sub> 0,02 0,06 0,10 0,22 0,39 0,44 α <sub>w</sub> 0,20Hz
Impact sound insulation	EN ISO 10140:2010	Approx. 33dB
Antistatic behavior	ISO 6356:2012	< 2 kV
Thermal resistance	ISO 8302:1991	Approx: 0.11K*m/ W <sub>w</sub>
Fire rating	DIN EN 13501-1	B <sub>fl</sub> - s1
Color fastness to light	ISO 105-B02:2000	5-6
Color fastness to water	DIN EN ISO 105 E01:2013	5
Rubbing fastness dry/wet	DIN EN ISO 105 X12:2002	5

# PA SAXONY 2900

Identification	Standard	Product Data
Manufacturing process	DIN ISO 2424	Tufting 1/10"
Frontside structure	DIN ISO 2424	Cut pile / Saxony
Color	DIN ISO 2424	Chromojet Print
Pile material		100% Polyamid PA
Primary backing	DIN ISO 2424	PP Woven
Secondary backing	DIN ISO 2424	Felt backing
Pile weight	DIN ISO 2424	Approx. 1245 g/m <sup>2</sup>
Total weight	ISO 8543	Approx. 2900 g/m <sup>2</sup>
Pile height	ISO 1766	Approx. 6 mm
Total thickness	ISO 1765	Approx. 10,50 mm
Number of knots	ISO 1763	Approx. 237.000 /m <sup>2</sup>
Width	DIN 3018	Approx. 400 cm
Wear classification	EN 1307:2004	33 heavy contract
Comfort rating	EN 1307:2004	LC 4
Surface resistance	ISO 10965	Approx. Ω
Vertical resistance	ISO 10965	Approx. Ω
Sound absorption coefficient	ISO 11654:1997-07	Hz 125 250 500 1000 2000 4000 α <sub>p</sub> 0,01 0,05 0,11 0,28 0,37 0,48 α <sub>w</sub> 0,30Hz
Impact sound insulation	EN ISO 10140:2010	Approx. 35dB
Antistatic behavior	ISO 6356:2012	< 2 kV
Thermal resistance	ISO 8302:1991	Approx: 0.13K*m/ W <sub>w</sub>
Fire rating	DIN EN 13501-1	B <sub>fl</sub> - s1
Color fastness to light	ISO 105-B02:2000	5-6
Color fastness to water	DIN EN ISO 105 E01:2013	5
Rubbing fastness dry/wet	DIN EN ISO 105 X12:2002	5



# PA SAXONY 3230

Identification	Standard	Product Data
Manufacturing process	DIN ISO 2424	Tufting 1/10"
Frontside structure	DIN ISO 2424	Cut pile / Saxony
Color	DIN ISO 2424	Chromojet Print
Pile material		100% Polyamid PA 6.6
Primary backing	DIN ISO 2424	PP Woven
Secondary backing	DIN ISO 2424	Felt backing 500 g/m <sup>2</sup>
Pile weight	DIN ISO 2424	+/- 1600 g/m <sup>2</sup>
Total weight	ISO 8543	+/- 3230 g/m <sup>2</sup>
Pile height	ISO 1766	+/- 10 mm
Total thickness	ISO 1765	+/- 12.5 mm
Number of knots	ISO 1763	+/- 1193000 /m <sup>2</sup>
Width	DIN 3018	+/- 400 cm
Wear classification	EN 1307:2004	32 heavy contract
Comfort rating	EN 1307:2004	LC 5
Fire rating	DIN EN 13501-1	C <sub>fl</sub> -s1
Remarks	Only suitable for rugs	



These details are approximate. Complete specification details and associated certificates together with tolerances applying to the above can be provided upon request. We reserve the right to alter specifications without notice. Due to method of manufacture, perfect pattern and/ or colour matching cannot be guaranteed. In cut pile carpet, shading/ pile reversal might occur without affecting overall quality and suitability. Shading/ pile reversal will not be considered as a manufacturing fault and will not affect durability of the carpet.

@ yo2.designs